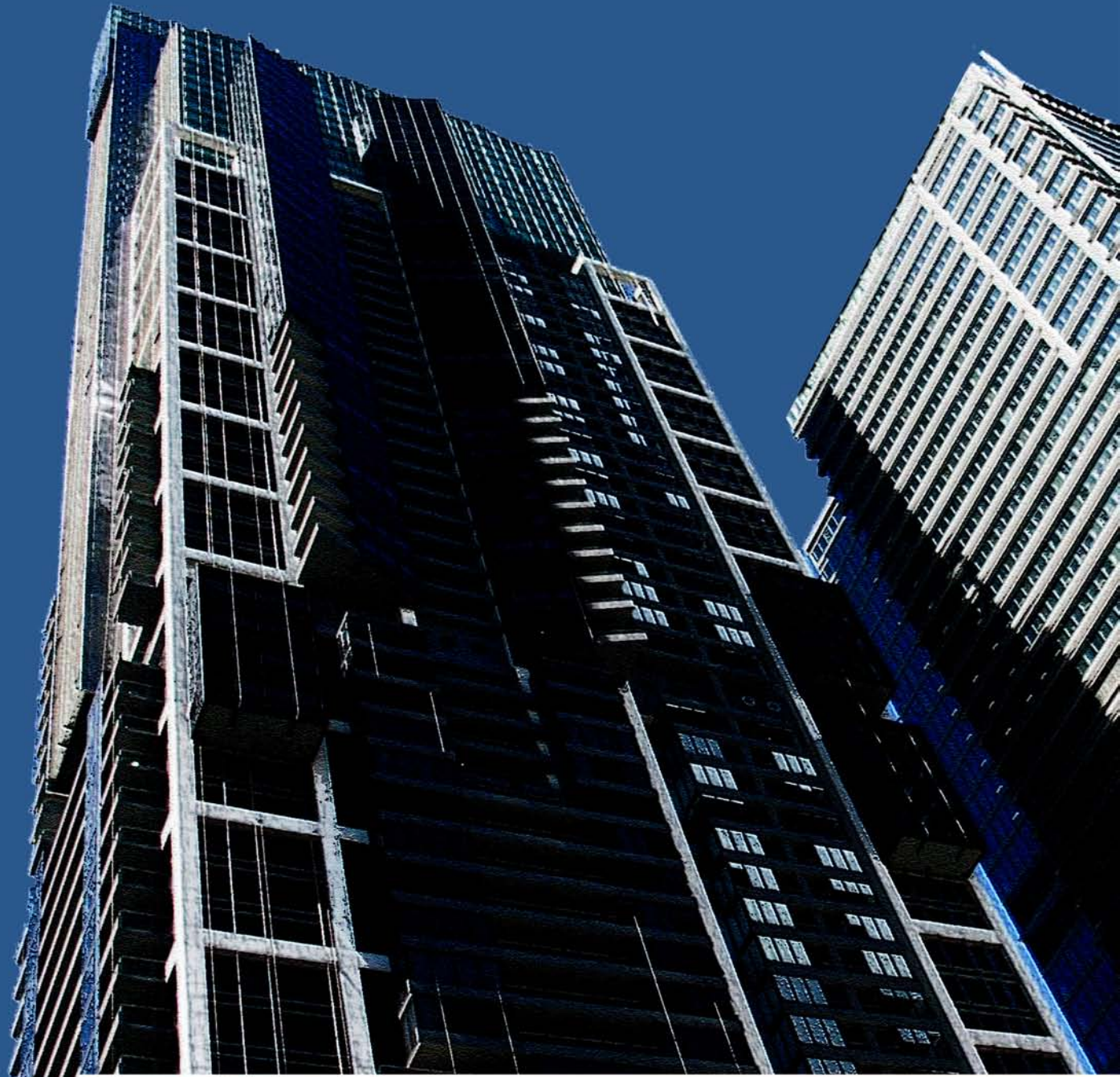




*Smart Air Conditioners for Smart people*



GENERAL CATALOGUE - 2006



Smart Air Conditioners for Smart people

**Wind Industries Inc.** is an American company headquartered in Dallas, Texas. It was established by its experienced owners and employees who have more than twenty years of experience in the HVAC industry.

In order to serve our Middle East customers Wind Industries has opened a regional office in the U.A.E, and in Amman-Jordan.

Wind Industries has a full range of high quality air conditioning and heating equipment such as:

#### Direct Expansion Range (DX):

- Mini splits (Wall mounted, Universal, Cassette, Floor Standing, and Concealed).
- Packaged units.
- Ducted Splits.
- VRV Systems.
- Air Curtains.
- Portable Air Conditioners.

#### Chilled Water Range:

- Air Handling Units (AHU's).
- Fan Coil Units (FCU's).
- Domestic Chillers.

Wind air conditioners are state-of-the-art products, which are manufactured in the U.S.A, and the Far East, whom are implementing high quality procedures and follow high international standards, such as ISO 9002, CE, TUV, ETL, UL, and SASO.



## FEATURES

- Multi function LCD wireless control with timer
- Automatically adjustable discharge louver
- Automatic restart function with memory
- Digitally controlled variable speed fan motor
- Whisper quiet random pitch cross flow fan
- Trapezoidal format grooved copper tubing
- Hydrophilic enhanced aluminum fins
- Ultra high efficiency rating
- Efficient durable and quiet compressor



**Metal Casing**



**Plastic Casing**

## OUTDOOR UNIT CHOICES

- Galvanized steel w/baked enamel
- Corrosion proof plastic (009-024)

## OPTIONAL ACCESSORIES

- Piping and installation kit(3,4,5,7m)
- Condenser bracket kit
- Line cover kit
- Over-under voltage / surge protector
- Active charcoal deodorizing filters
- Photo-catalyst anti-biological filters
- Ionizer module ( anion generator)
- Electrostatic-plasma filter module



**WA (009-024 C/H)**



**WB (009-024 C/H)**



**WA (030-036 C/H)**



PICTURED: KARLA; PHOTO © KEN HAYDEN



**Metal Casing**



**Plastic Casing**



**TA (018-048 C/H)**



PICTURE: © PAUL WARCHOL

## FEATURES

- Multi function LCD wireless control with timer
- Automatically adjustable discharge louver
- Automatic restart function with memory
- Digitally controlled variable speed fan motor
- Whisper quiet random pitch cross flow fan
- Trapezoidal format grooved copper tubing
- Hydrophilic enhanced aluminum fins
- Ultra high efficiency rating
- Efficient, durable and quiet compressor

## OUTDOOR UNIT CHOICES

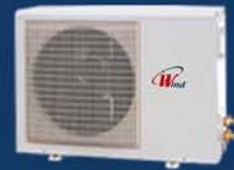
- Galvanized steel w/ baked enamel
- Corrosion proof plastic (018-024)

## OPTIONAL ACCESSORIES

- Piping and installation kit (3,4,5,7m)
- Condenser bracket kit
- Line cover kit
- Over-under voltage / surge protector
- Active charcoal deodorizing filters
- Photo-catalyst anti-biological filters
- Ionizer module ( anion generator)
- Electrostatic-plasma filter module

## FEATURES

- Multi function LCD wireless control with timer.
- Automatically adjustable discharge louver
- Automatic restart function with memory
- Digitally controlled variable speed fan motor
- Whisper quiet random pitch cross flow fan
- Trapezoidal format grooved copper tubing
- Hydrophilic enhanced aluminum fins
- Ultra high efficiency rating
- Efficient, durable and quiet compressor



**Metal Casing**

**Double  
Outdoor  
Casing**



## OUTDOOR UNIT CHOICES

- Galvanized steel w/ baked enamel
- Corrosion proof plastic (018-024)

## OPTIONAL ACCESSORIES

- Piping and installation kit (3,4,5,7m)
- Condenser bracket kit
- Line cover kit
- Over-under voltage / surge protector
- Active charcoal deodorizing filters
- Photo-catalyst anti-biological filters
- Ionizer module ( anion generator)
- Electrostatic-plasma filter module



**FA (018-060 C/H)**





**Metal Casing**



**Double  
Outdoor  
Casing**



**Ceiling**



**Floor**

**UA (012-060 C/H)**



## FEATURES

- Multi function LCD wireless control with timer
- Automatically adjustable discharge louver
- Automatic restart function with memory
- Digitally controlled variable speed fan motor
- Whisper quiet random pitch cross flow fan
- Trapezoidal format grooved copper tubing
- Hydrophilic enhanced aluminum fins
- Ultra high efficiency rating
- Efficient, durable and quiet compressor

## OUTDOOR UNIT CHOICES

- Galvanized steel w/ baked enamel
- Corrosion proof plastic (018-024)

## OPTIONAL ACCESSORIES

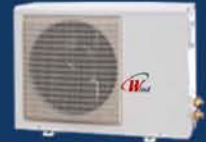
- Piping and installation kit (3,4,5,7m)
- Condenser bracket kit
- Line cover kit
- Over-under voltage / surge protector
- Active charcoal deodorizing filters
- Photo-catalyst anti-biological filters
- Ionizer module ( anion generator)
- Electrostatic-plasma filter module

## FEATURES

- Ultra sleek low profile design
- Digitally controlled multi speed fan motor
- Whisper quiet multiple centrifugal blowers
- Trapezoidal format grooved copper tubing
- Hydrophilic enhanced aluminum fins
- Ultra high efficiency rating
- Optional emergency electric heater
- Full return air plenum w/permanent filter
- Corrosion resistant GI galvanized casing
- Heavy duty CSR internal insulation
- Efficient, durable and quiet compressor



**Plastic Casing**



**Metal Casing  
(A)**



**Double Outdoor  
Metal Casing**



**Metal Casing  
(B)**

## OPTIONAL ACCESSORIES

- Multi function LCD wired control with timer
- Optional LCD wireless remote transmitter
- Piping and installation kit(3,4,5,7m)
- Condenser bracket kit
- Line cover kit
- Over-under voltage / surge protector
- Active charcoal deodorizing filters
- Photo-catalyst anti-biological filters
- Ionizer module (anion generator)
- Electrostatic-plasma filter module
- Digital wired controller



**DL-S (009-048 C/H)**  
(Low STATIC-0.3" W.C.-75 PA)



**DM (018-060 C/H)**  
(MEDIUM STATIC- 0.4" W.C. -100PA)



**DH (018-060 C/H)**  
(HIGH STATIC-0.8" W.C.-200PA)



## FEATURES

- All fan coils are manufactured with high quality galvanized steel to resist corrosion
- Mounting holes and / or slots are pre-drilled to save installation time and field labor expense
- Plenum and Cabinet insulated to increase efficiency and insure quiet operation
- All units will be supplied with standard 25 mm; Thin aluminum washable mesh filter
- Standard motors are 3 speeds, with internal thermal overload protection
- Coils have 3/8" O.D. seamless copper tubing mechanically bounded to high efficiency aluminum fins
- Drain pans is made of coated metal
- Drain pan exterior is insulated with a closed cell fire retardant rubber insulation to prevent sweating
- All drain pans are sloped towards the drain connection to facilitate condensate removal

## OPTIONAL ACCESSORIES

- Drain pans connections can be provided from both sides
- Fiber Glass drain pan
- 1/2" Fiber glass insulation or 10 mm; Closed cell rubber insulation for the plenum
- Motorized/hand valve package
- Thermostats
- 3-speed switches
- Hot water coil
- Copper tubes/ copper fins coil, electric heat





## FEATURES

- High-efficiency.
- High-quality, best types of compressors in the industry such as scroll Copeland compressors, and hermetic scroll compressors.
- Low noise, scroll compressors operate eight times quieter than any reciprocating technology.
- Enhanced compressor, and motor performance without complicated design.
- Ability to start under any system load.
- Motor windings are completely protected from high velocity entering suction gas.
- Low heat losses.
- High temperature operation is possible without external cooling
- Condenser coils are aluminum fins on copper tube coil construction, designed for maximum heat transfer and circuited for sub cooling.
- Evaporator coils are aluminum fins on copper tube coil construction, designed for maximum heat transfer.
- All- weather cabinets and panels constructed of prime grade G60 galvanized steel, which gives maximum protection and durability for the unit.
- Direct drive condenser fans, ensures quiet, and dependable operation via advanced fan and venture design concepts.
- Compact design.
- Wind Package Units are provided with 1 inch thick cleanable air filters. (2 inch is an option).



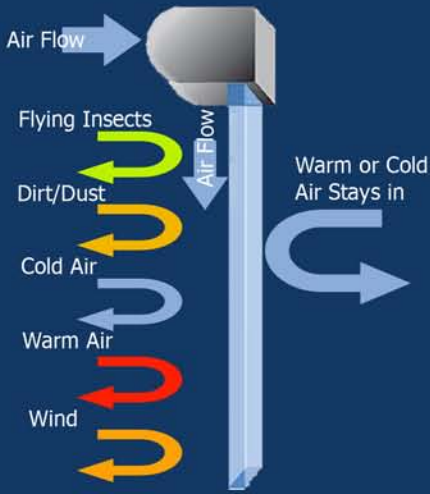
## PROTECTION DEVICES

- High pressure switch: Protects the entire refrigerant system from abnormally high operating pressures.
- Low pressure switch: Protects against low pressure conditions and loss of refrigerant charge.
- Crankcase heater: helps keep oil in the crankcase and liquid refrigerant out.
- Positive acting timer: Prevents short cycling of the compressor if power supply is interrupted.
- Motor protection: Both temperature and current sensing devices are provided to prevent failure from electrical overload.
- Fan safety guards: Fans are provided with safety guards as well as rain shields for fan motor protection.
- Head pressure control: Built in through fan cycling. In units with multiple fans, these are cycled by a head pressure sensor. Individual fans are partitioned off to ensure maximum cooling efficiency during cycle.

## OPTIONS AND ACCESSORIES

- Economizer: A fully modulating damper motor positions outside and return air dampers so that outside air will be used to satisfy the building cooling load.
- Relief Damper: Gravity operated damper and hood assembly for use with economizer to relieve positive building pressure.
- Crankcase heater.

**AIR CURTAINS: 60, 90, 120 AND 150 CM LENGTHS (EACH WITH: LOW, MEDIUM AND HIGH VELOCITY VERSIONS)**



**AIR CURTAIN -  
DIAGRAMMATIC ANALYSIS**



**AIR CURTAINS**

## STANDARD FEATURES

- Designed for standard wall hung installation
- Latest design attractive appearance
- Ultra quiet design with less than 60 DB sound level
- Adjustable discharge louver for directing the air flow
- Available in 60, 90, 120 and 150 cm lengths
- Simple push button operation
- 2 speed PSC fan motor
- Ultra quiet cross flow blower wheels
- Available with 90, 125 and 150 mm diameter blowers for optimum versatility
- Extra heavy gauge galvanized steel cabinet
- Electrostatic powder coat paint
- Louvered abs plastic return air panels with coordinated color
- Full size hanging bracket

## OPTIONAL FEATURES

- Single or 3 phase electric heaters (High Velocity Versions Only)



# OPTIONAL AIR FILTERS

## Plasma:

Plasma electrodes create a field that breaks down odors at their molecular level for lightning fast deodorization. The Plasma deodorization process works by energizing molecules and accelerating them with a pulse generator. These molecules collide with the odor molecules breaking them down into carbon dioxide and water vapor. This is called "Non" Thermal Ionic Corona Discharge Plasma Purifier. The Plasma decontamination is the ultimate technology that helps protect from airborne biological and chemical agents in immediate area. the key to the success of its purification methods is the creation of a cold gas plasma, which is referred to as Purifying Plasma is an excitation of gas by radio frequency energy. It can destroy a vast array of indoor contamination.

## Activated Charcoal

Granular Activated Charcoal Web Odor Removing Filter is made up of highly porous active carbon granules suspended into a matrix. Efficiently absorbs and retains foul odors and harmful gases, such as Adhesives, Exhaust gases, Cigarette smoke, Cleaning compounds, Gasoline, Hospital odors, Perfumes, Pet odors, Cooking odors, Cosmetics, Paint odors, Smog. This filter needs to be replaced periodically, at approximately 3 month intervals; when it becomes fouled by absorbed chemicals

## Catechin

"Catechin", the main ingredient of Green Tea, inactivates the virus present in the air. For years research has proven many beneficial aspects of this wonderful ingredient. Available in a concentrated form within an air filtration medium, it effectively kills viruses passing through it, providing healthy living environment and preventing the spread of diseases. Catechin filter has a very long operational life up to 3 years. Maintenance is simply done by removing the dust once every few months

## Ionizer

Ionizer is essential equipment for making the surrounding air a healthy zone, by attaching an electrical charge to the air. This negative charge then attracts positively charged contaminant particles floating in the air and weighs them down so they sink out of the air. They can be easily collected by normal cleaning activities, such as vacuuming and dusting. Ionizer air cleaner uses two powerful air cleaning agents (which are also used in nature); negative ions and ozone. Ozone oxidizes harmful contaminants, causing them to lose their toxicity and odor-ionizer purifier is designed to produce enough ozone for just a single room or open space up to 500 sq. ft. so they will not produce excessive levels. Also, it is very unlikely that the electrodes within the ionizer purifier will ever wear down or erode, since they are made from stainless steel. Stainless steel parts and solid state technology are used to ensure stable, reliable, and durable operation for many years.

## MOUNTING ACCESSORIES



Painted Steel



Stainless Steel



Split System Piping/  
Wiring Set



Electronic Voltage and Phase  
Protection Kits



Bulk Piping/ Insulation Set

## CONDENSING UNIT LINE CONVERTER





*Smart Air Conditioners for Smart people*

**Contact Information**

*P.O.Box 741074 Dallas, Texas 75374 USA*

*Tel: +9725639289*

*Fax: +9725635783*

*Website: [www.windind.com](http://www.windind.com)*

*E-mail address: [info@kg-ind.com](mailto:info@kg-ind.com)*

*Distributed by:*