

Chilled Water FCU

"A" Series

▶ 300 - 2500 CFM

Horizontal Fan Coil
50hz



www.windind.com

CONTENTS

GENERAL CONSTRUCTION	3
MODEL NUMBER NOMENCLATURE	4
DIMENSIONS	5
FAN PERFORMANCE DATA	7
GENERAL SPECIFICATIONS	22
COOLING CAPACITY CORRECTION FACTORS	23
COOLING CAPACITY (BTU)	24

GENERAL CONSTRUCTION

COIL

Coils have 3/8" O.D. seamless copper tubing mechanically banded to high efficiency aluminum fins. Each coil is factory tested at 350 psig, and easily accessible for service.

Manual air vents are standard on all coils. Left and right hand coil connections are available. We will furnish right hand connection, if not specified in the order.

DRAIN PANS

Drain pans are made of coated metal. Drain pan exterior is insulated with a closed cell fire retardant rubber insulation to prevent sweating.

All drain pans are sloped towards the drain connection to facilitate condensate removal.

* Drain pans connections provided from both sides is optional.

* Fiber Glass drain pan could be provided

* 1/2" Fiber glass insulation or 10 mm. closed cell rubber insulation for the plenum could be provided according to customer order.

OPTIONS

Available options include motorized/hand valve package, thermostats, 3-speed switches, hot water coil, copper tubes/copper fins coil, electric heat. Contact factory for other available options.

BASIC UNIT

All fan coils are manufactured with high quality galvanized steel to resist corrosion.

All models are approved for installation with "0" clearance and wiring connections are easily accessible. Mounting holes and / or slots are pre-drilled to save installation time and field labor expense.

PLENUMS AND CABINETS

Plenum and Cabinet insulated to increase efficiency and insure quiet operation.

AIR FILTER

All units will be supplied with standard 25 mm. thin aluminum washable mesh filter. Filter is easily removable for cleaning and service.

MOTORS & BLOWER WHEELS

Standard motors are 3 speed, 220V / 1ph / 50 Hz, PSC type with internal thermal overload protection and mounted with rubber bushings. Blower wheels are centrifugal.

MODEL NUMBER NOMENCLATURE

L A - 03 P - 4R - LH

L = Chilled Water FCU

Series

Nominal CFM

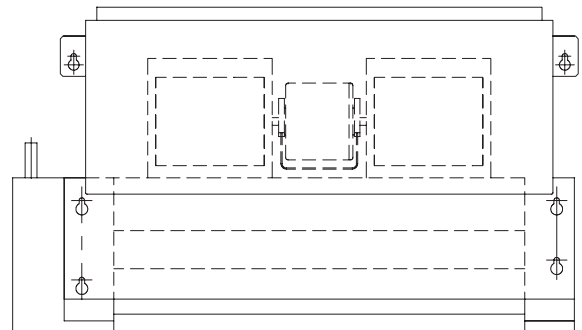
Coil Connections
(Look at front view)
RH = Right Hand
LH = Left Hand

Number of Row coil
2R = 2 Row coil
3R = 3 Row coil
4R = 4 Row coil
6R = 6 Row coil

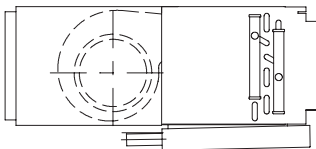
With Plenum



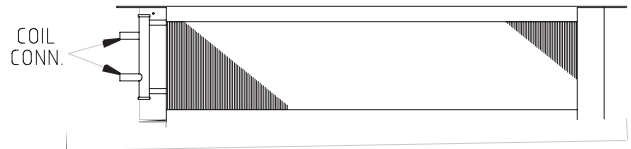
TOP VIEW



SIDE VIEW



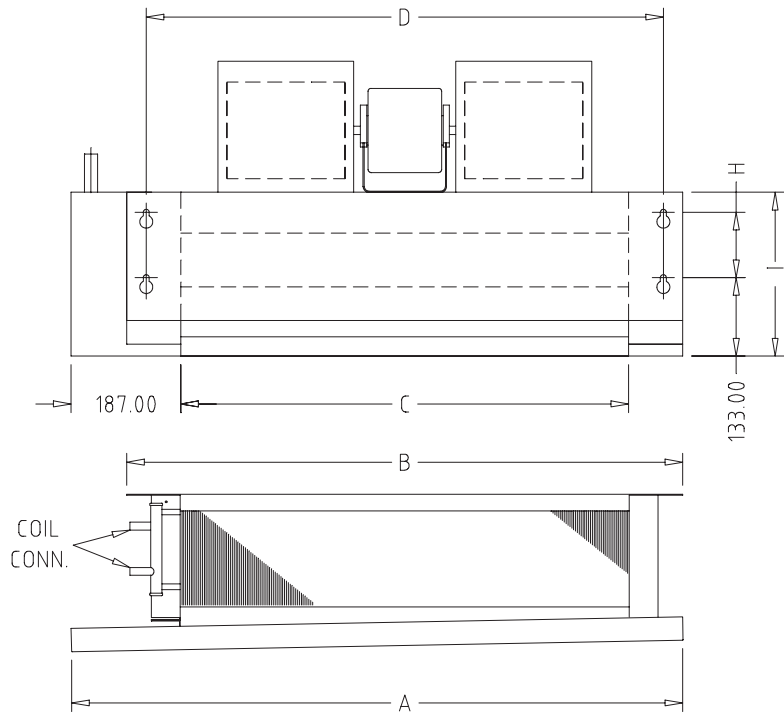
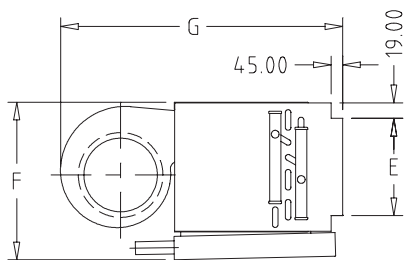
FRONT VIEW



LA-03P-4R-LH

DIMENSIONS (WITHOUT PLENUM)

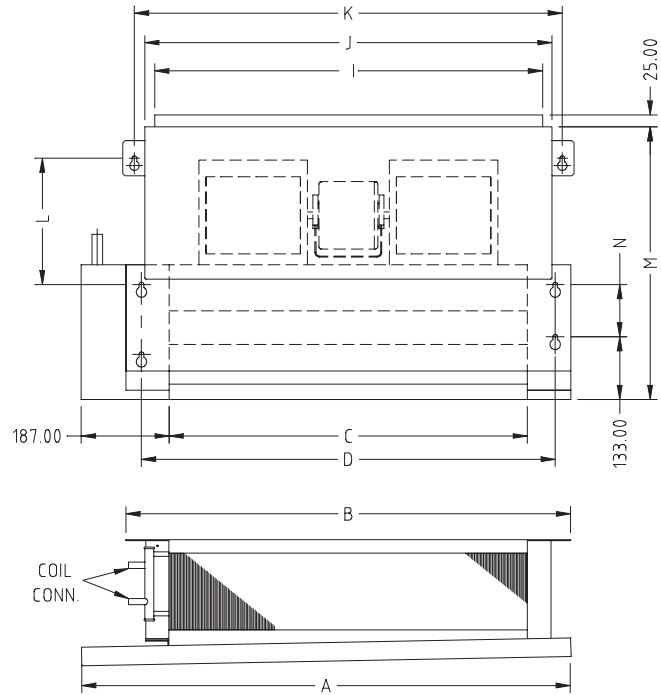
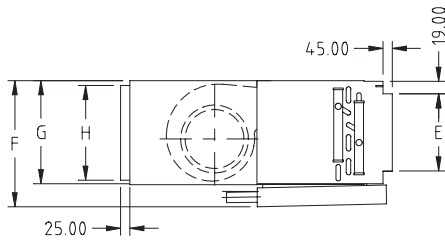
LA-03-25



MODEL	DIMENSION (MM)								
	A	B	C	D	E	F	G	H	I
LA - 03	832	743	559	692	171	282	470	111	278
LA - 04	934	845	661	794	171	282	470	111	278
LA - 06	1035	946	762	895	171	282	554	167	334
LA - 08	1188	1099	915	1048	171	282	554	167	334
LA - 10	1340	1251	1067	1200	222	333	600	167	334
LA - 12	1238	1149	965	1098	280	381	636	211	378
LA - 14	1289	1200	1016	1149	280	381	661	211	378
LA - 16	1442	1353	1169	1302	320	423	694	211	378
LA - 20	1594	1505	1321	1454	320	423	694	211	378
LA - 25	1493	1404	1220	1353	422	525	739	211	378

DIMENSIONS (WITH PLENUM)

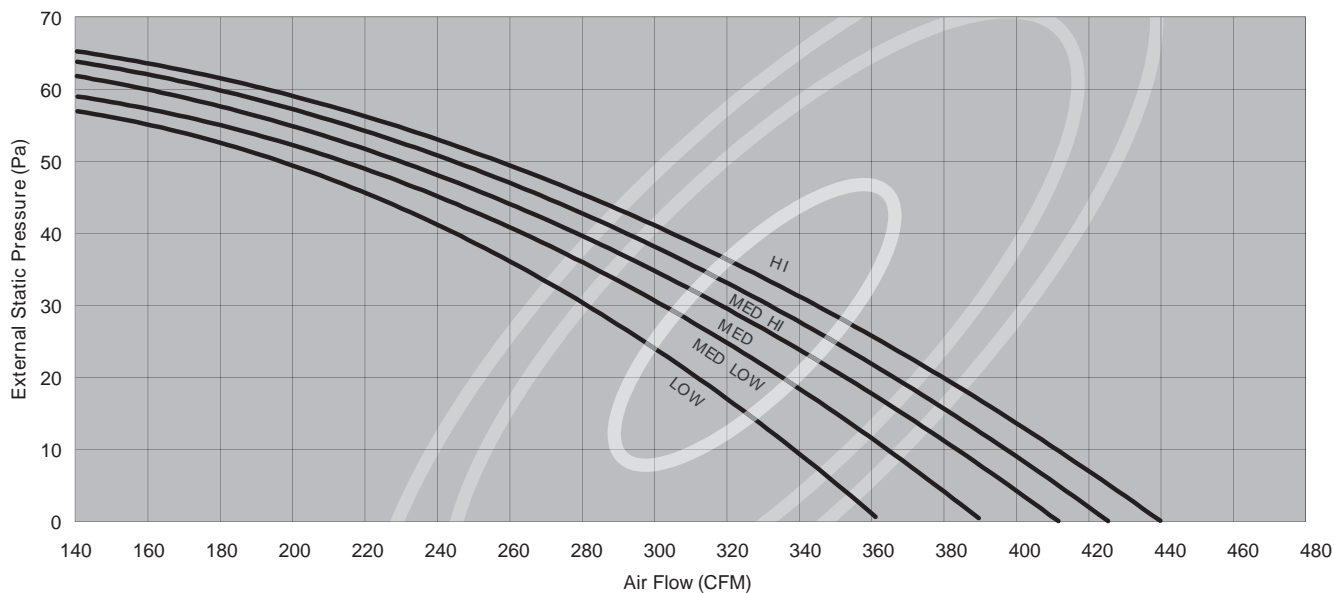
LA-03-25



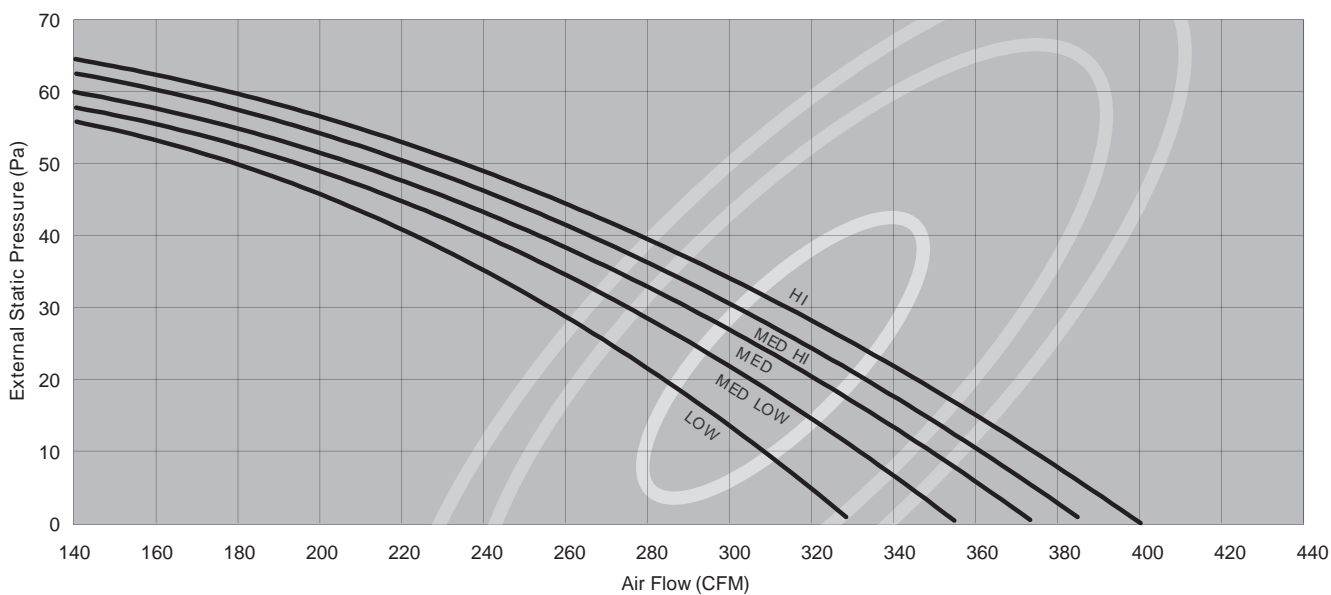
MODEL	DIMENSION (MM)													
	A	B	C	D	E	F	G	H	I	J	K	L	M	N
LA - 03	832	743	559	692	171	282	255	203	607	737	787	273	582	111
LA - 04	934	845	661	794	171	282	255	203	709	762	812	273	582	111
LA - 06	1035	946	762	895	171	282	255	203	811	864	914	273	638	167
LA - 08	1188	1099	915	1048	171	282	255	203	960	1016	1066	273	638	167
LA - 10	1340	1251	1067	1200	222	333	255	254	1111	1168	1218	273	638	167
LA - 12	1238	1149	965	1098	280	381	354	247	1013	1084	1134	326	722	211
LA - 14	1289	1200	1016	1149	280	381	354	247	1064	1135	1185	326	722	211
LA - 16	1442	1353	1169	1302	320	423	394	312	1170	1286	1336	386	782	211
LA - 20	1594	1505	1321	1454	320	423	394	312	1324	1440	1490	386	782	211
LA - 25	1493	1404	1220	1353	422	525	496	414	1205	1321	1371	341	827	211

FAN PERFORMANCE DATA

DRY COIL INDOOR FAN CURVE LA-03-2R 50 Hz

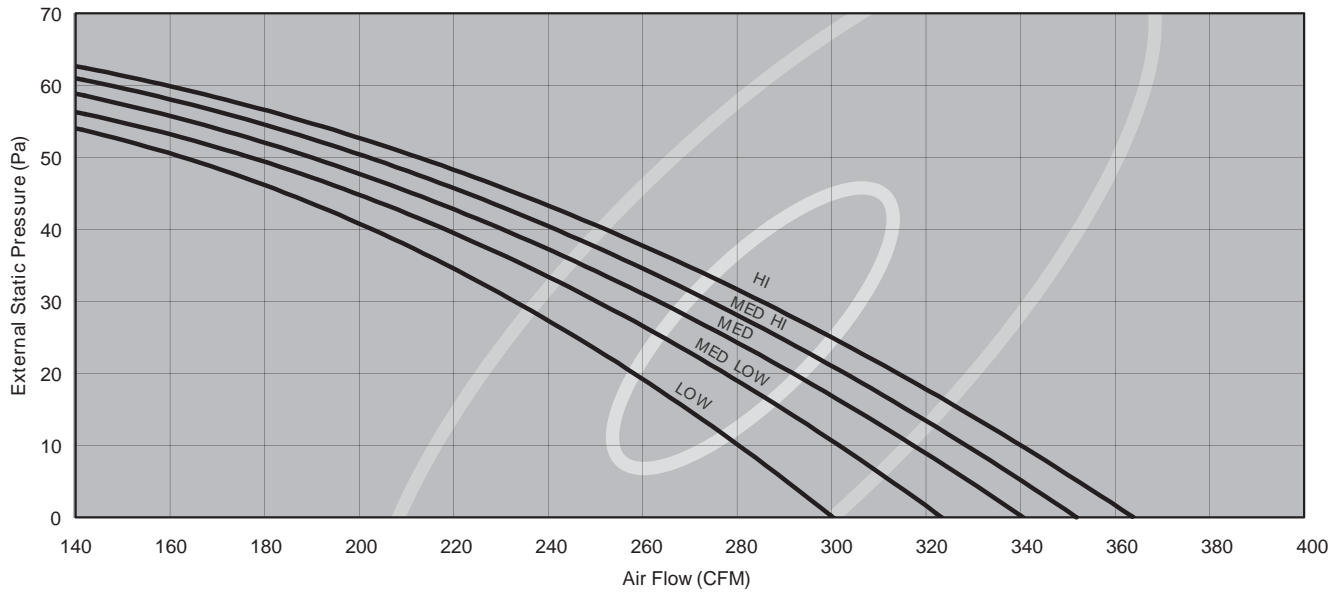


DRY COIL INDOOR FAN CURVE LA-03-3R 50 Hz



FAN PERFORMANCE DATA

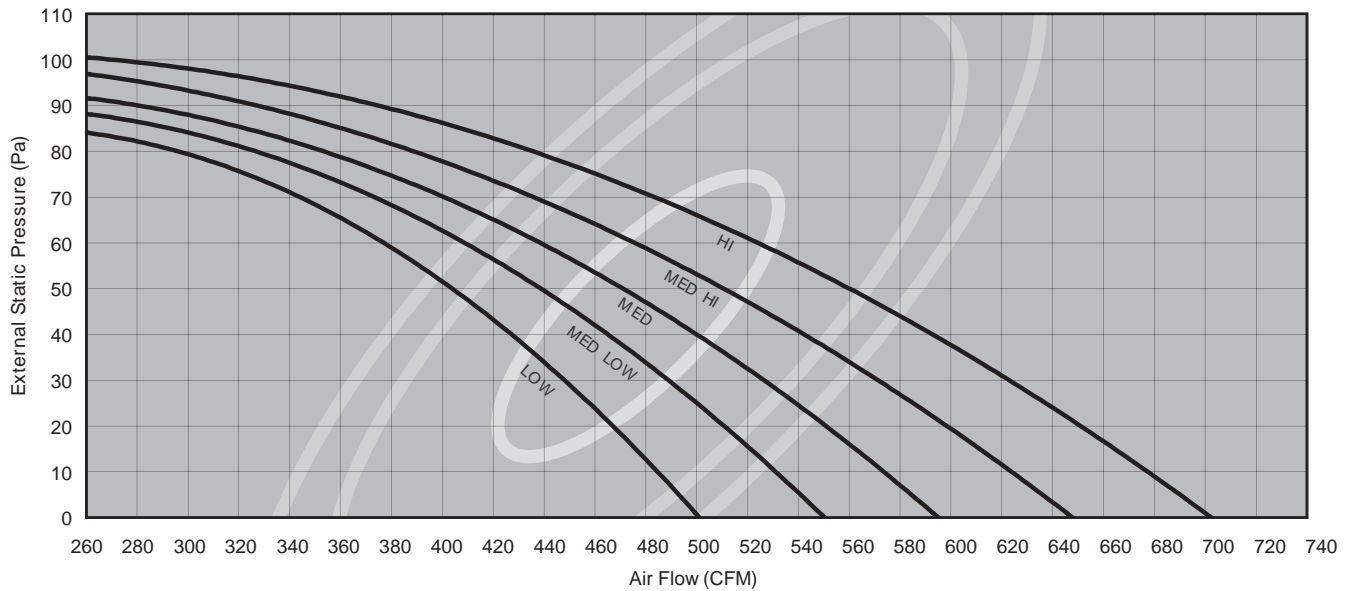
DRY COIL INDOOR FAN CURVE LA-03-4R 50 Hz



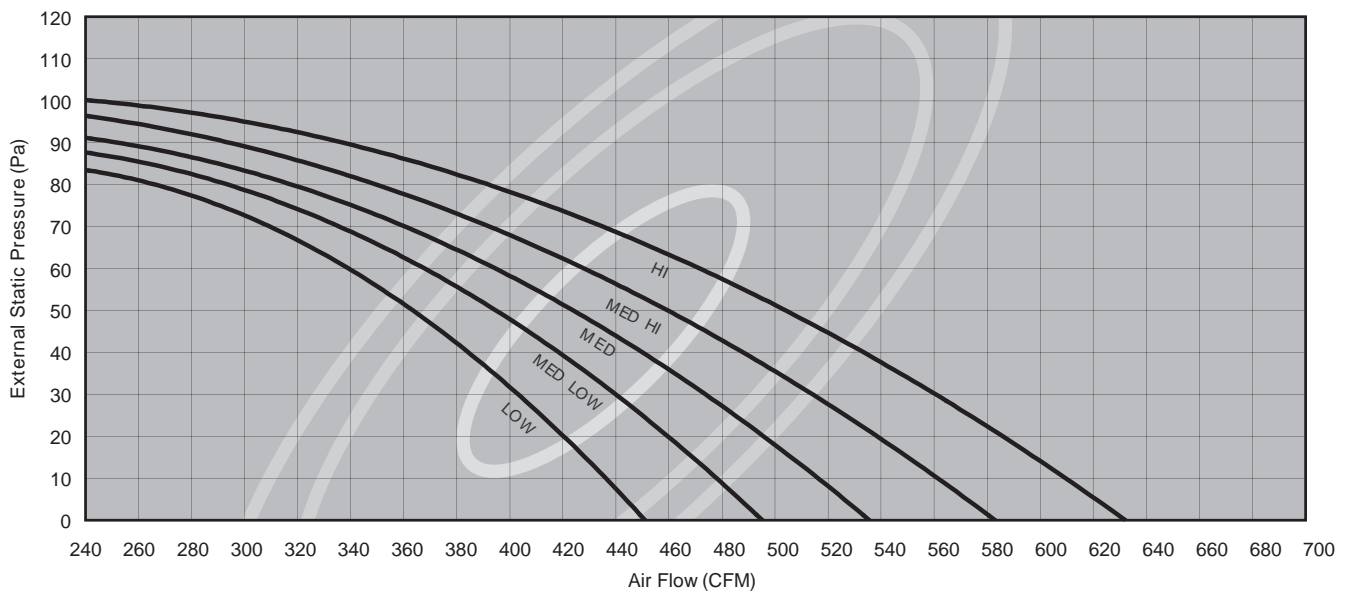
Wind
Industries, Inc.
Conditioners for smart people

FAN PERFORMANCE DATA

DRY COIL INDOOR FAN CURVE LA-04-2R 50 Hz

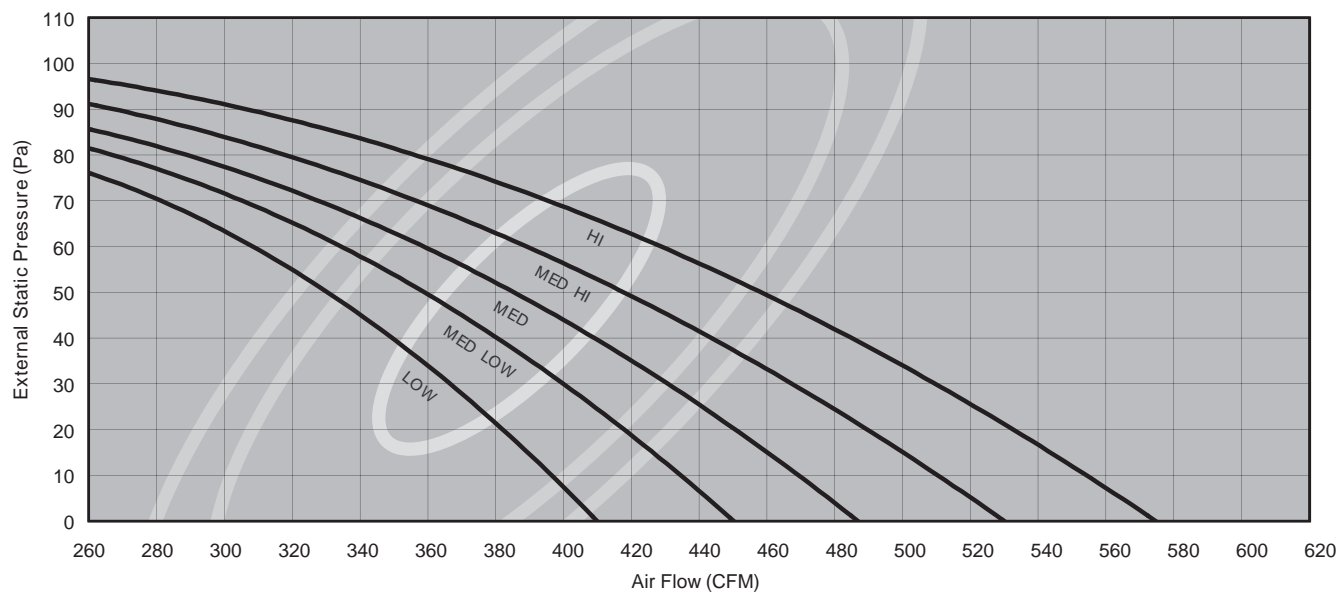


DRY COIL INDOOR FAN CURVE LA-04-3R 50 Hz



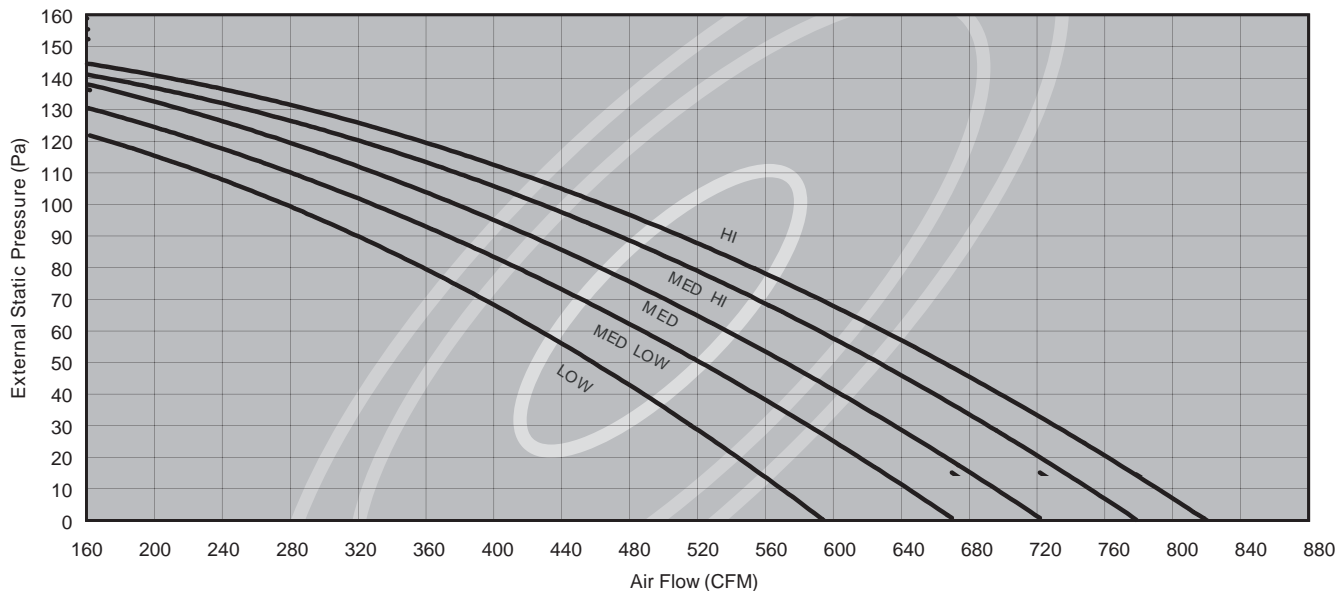
FAN PERFORMANCE DATA

DRY COIL INDOOR FAN CURVE LA-04-4R 50 Hz

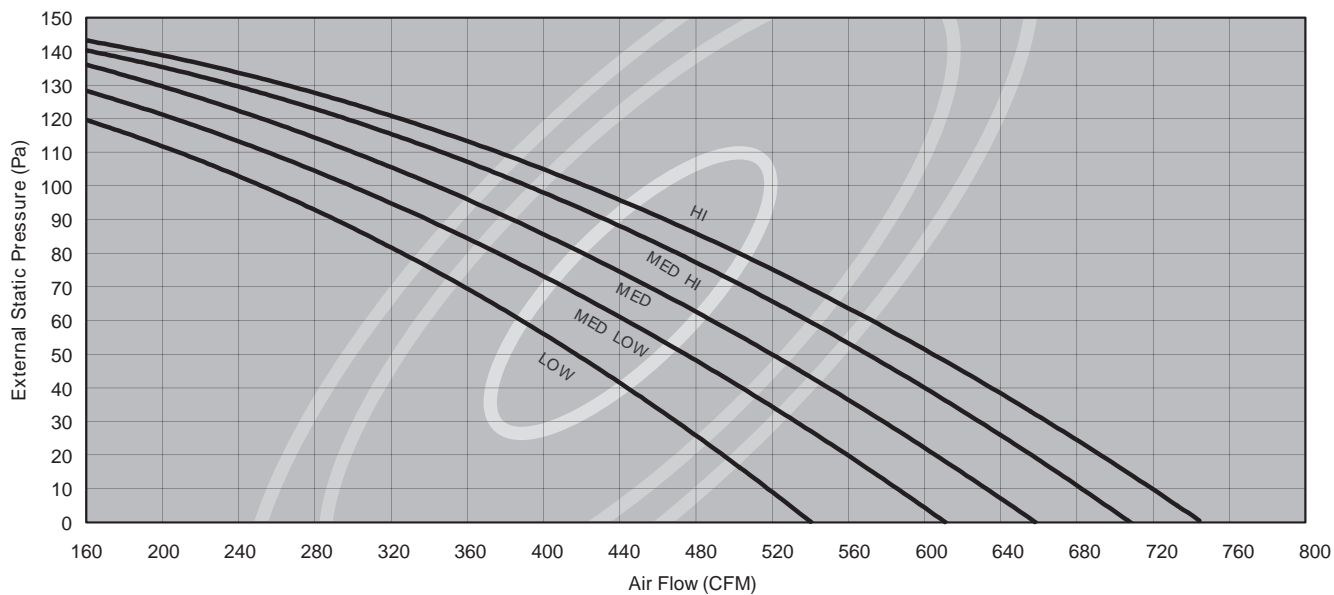


FAN PERFORMANCE DATA

DRY COIL INDOOR FAN CURVE LA-06-3R 50 Hz

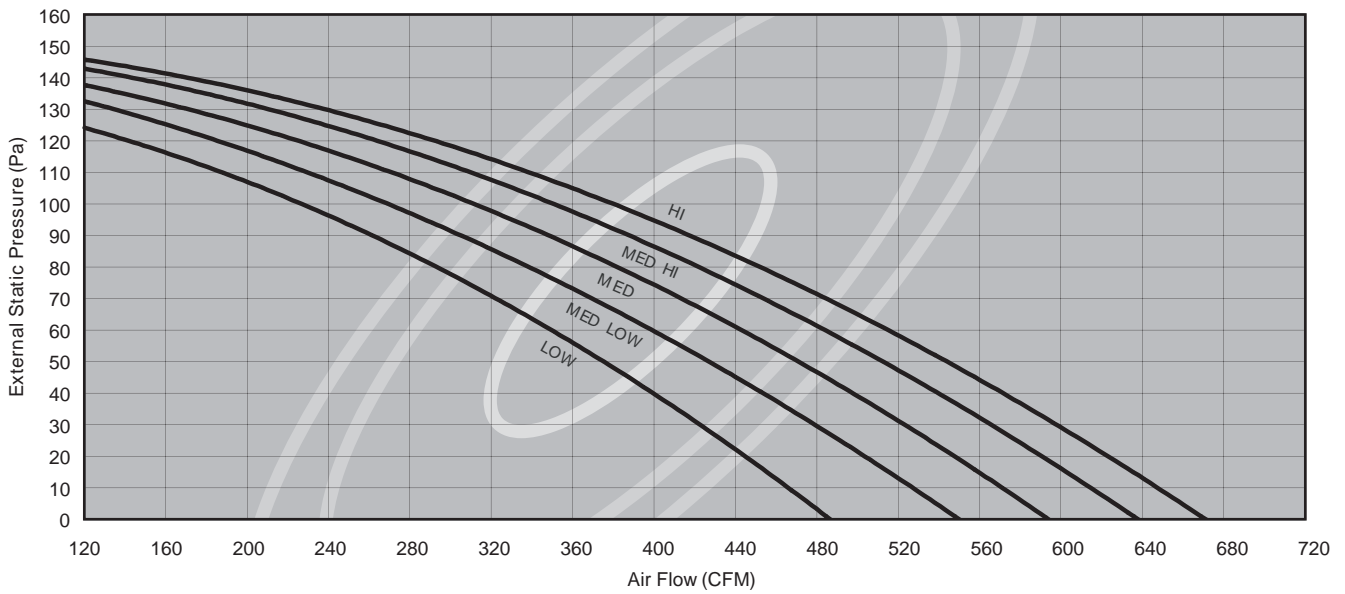


DRY COIL INDOOR FAN CURVE LA-06-4R 50 Hz



FAN PERFORMANCE DATA

DRY COIL INDOOR FAN CURVE LA-06-6R 50 Hz

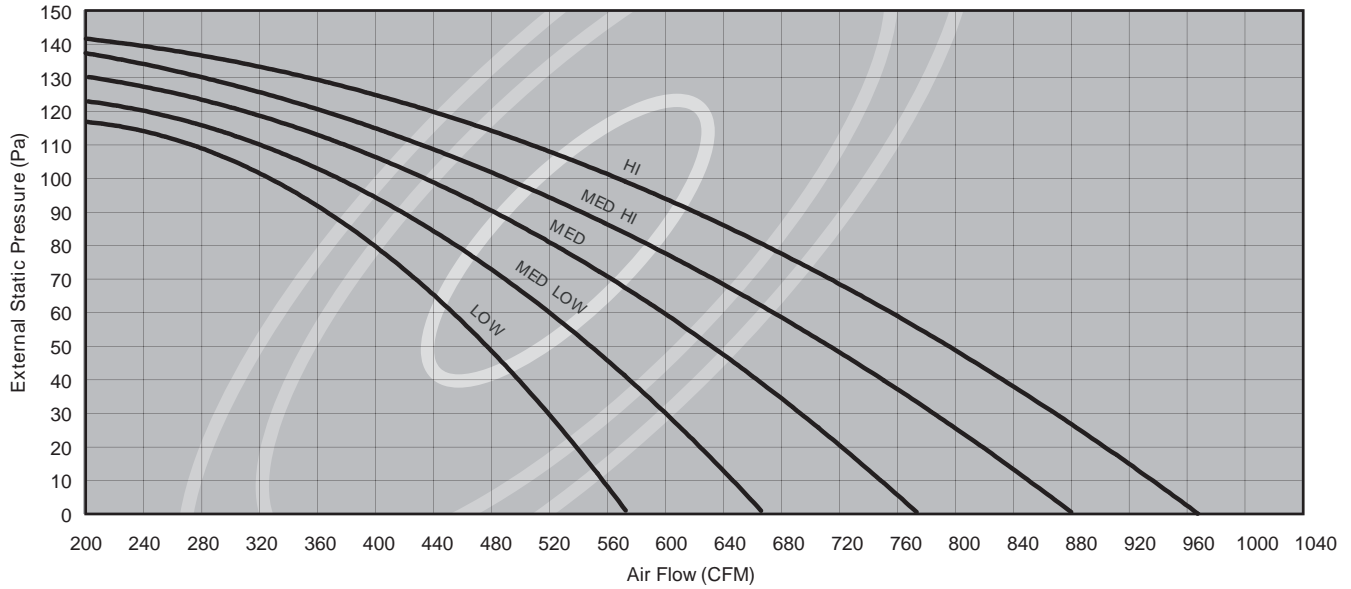


Trinal
Industries, Inc.

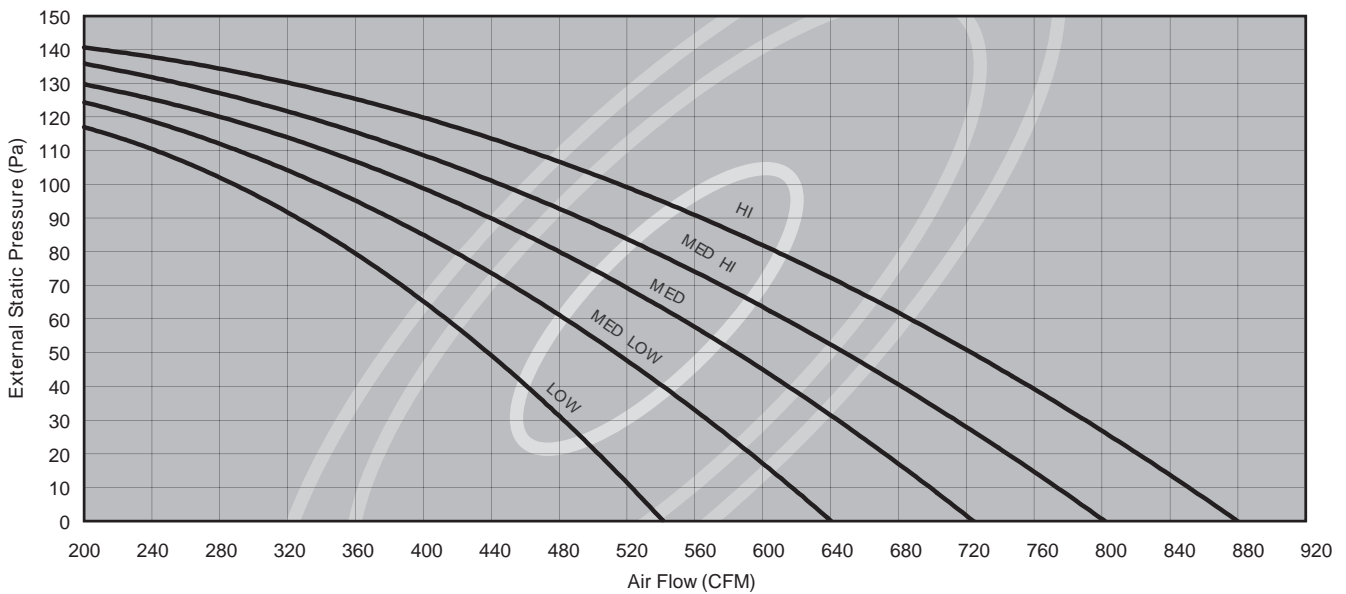
Smart Air conditioners for smart people

FAN PERFORMANCE DATA

DRY COIL INDOOR FAN CURVE LA-08-3R 50 Hz

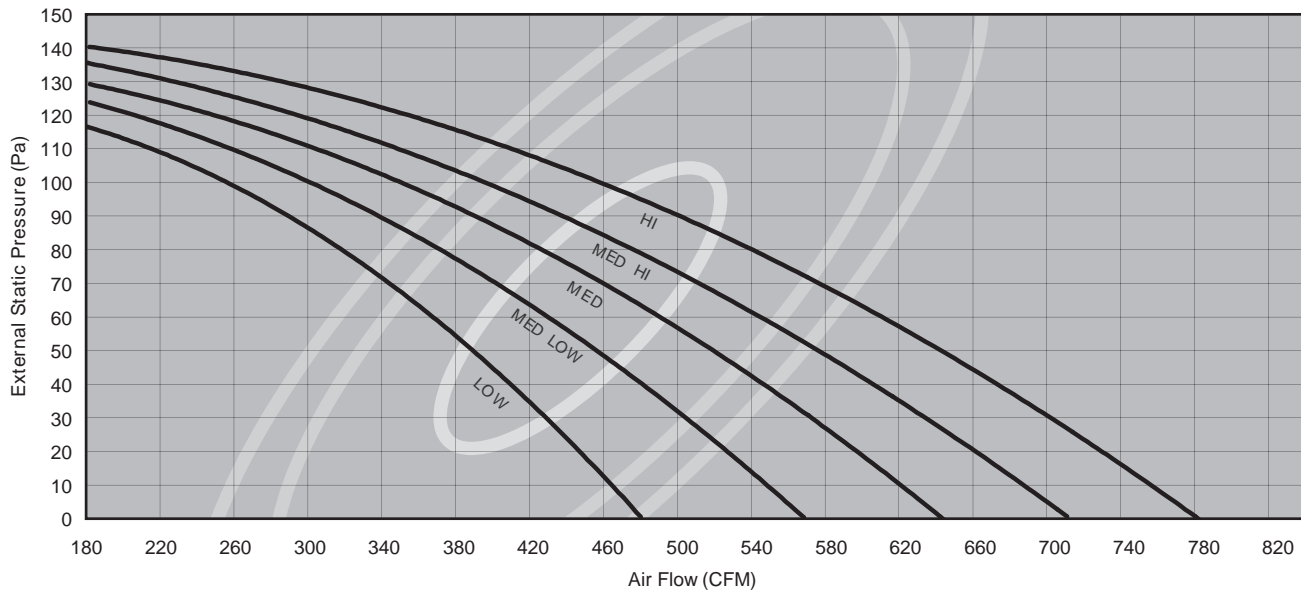


DRY COIL INDOOR FAN CURVE LA-08-4R 50 Hz



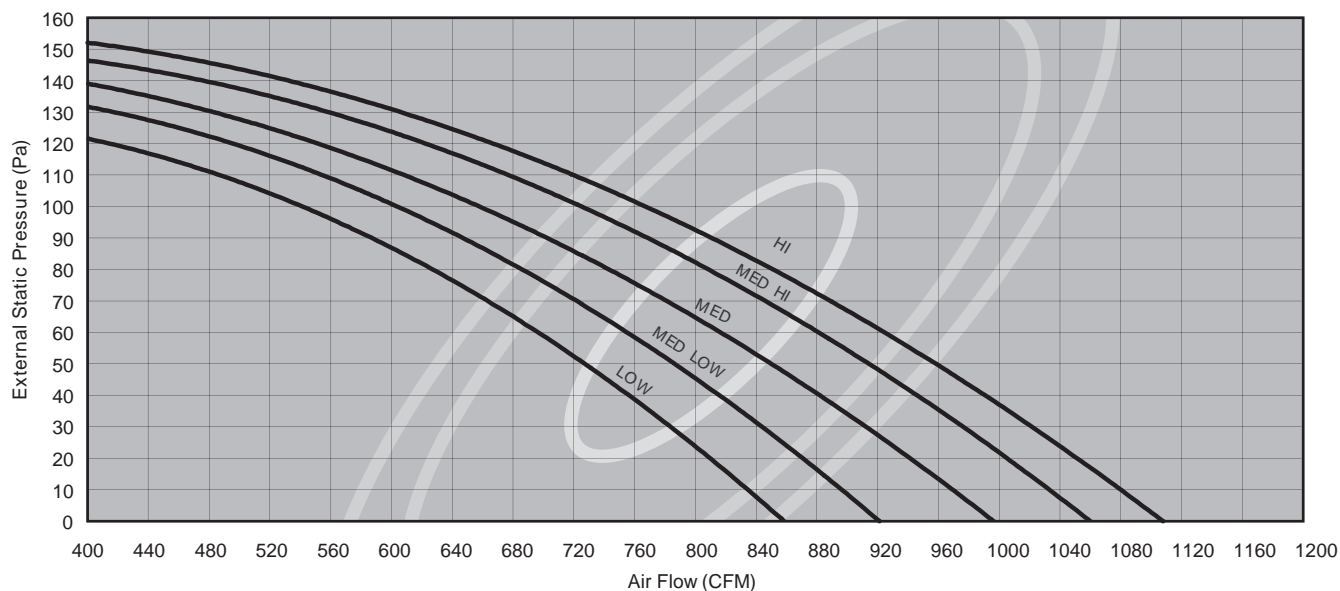
FAN PERFORMANCE DATA

DRY COIL INDOOR FAN CURVE LA-08-6R 50 Hz

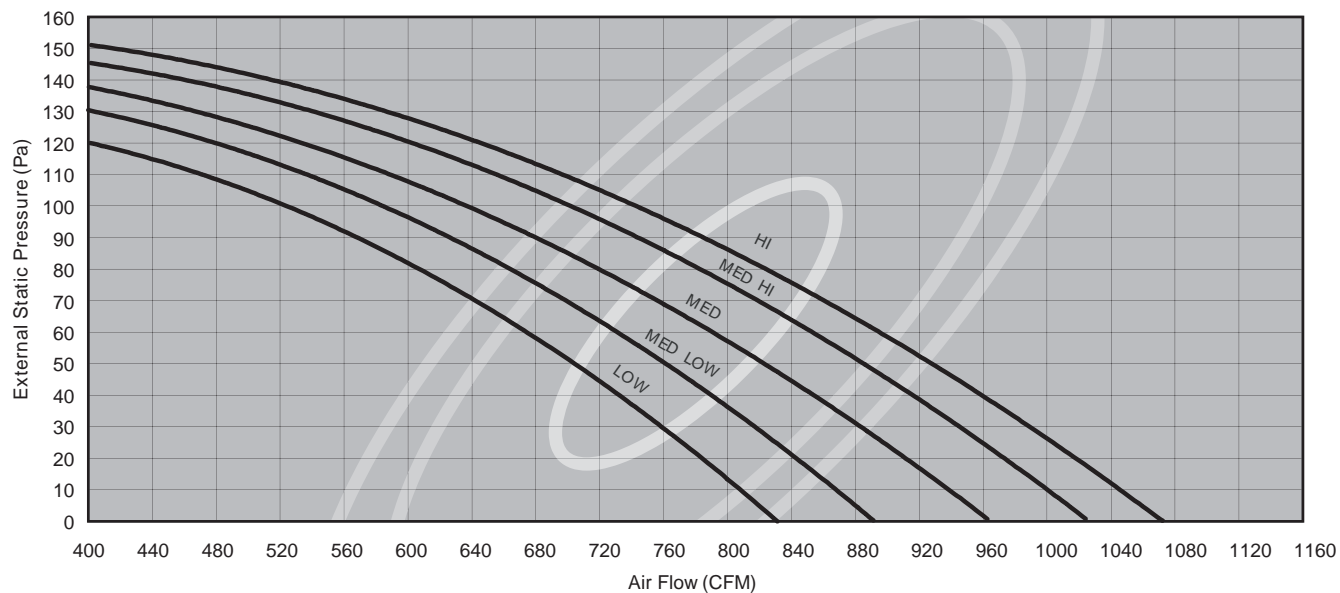


FAN PERFORMANCE DATA

DRY COIL INDOOR FAN CURVE LA-10-3R 50 Hz

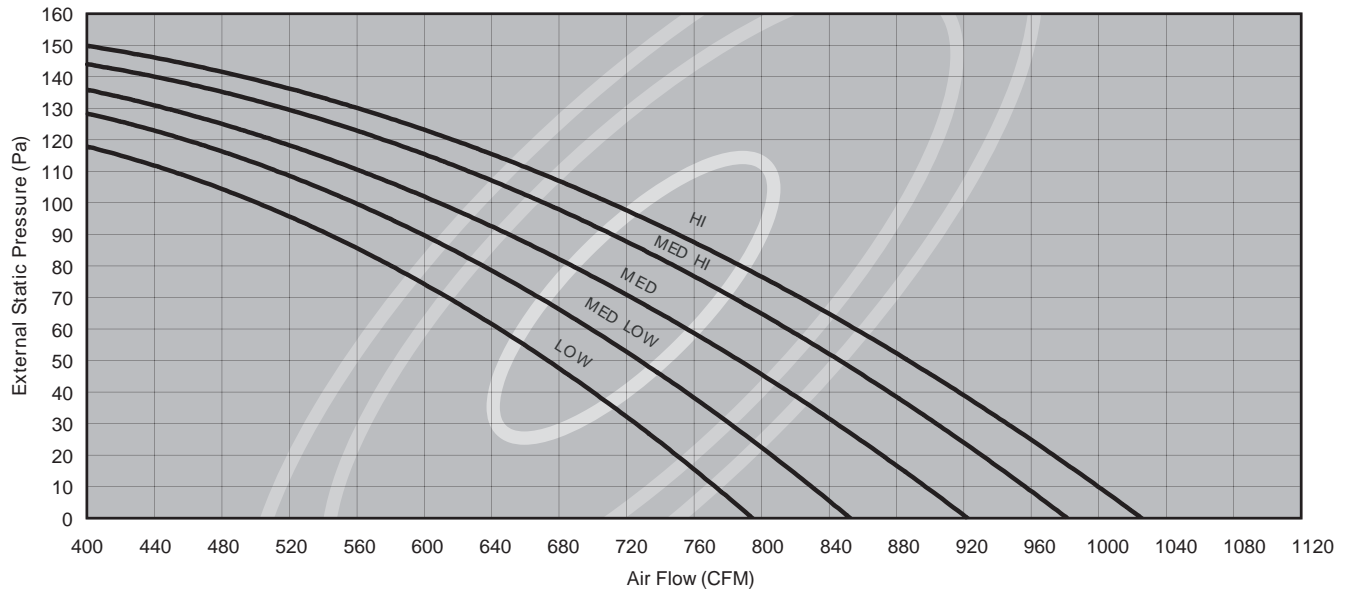


DRY COIL INDOOR FAN CURVE LA-10-4R 50 Hz



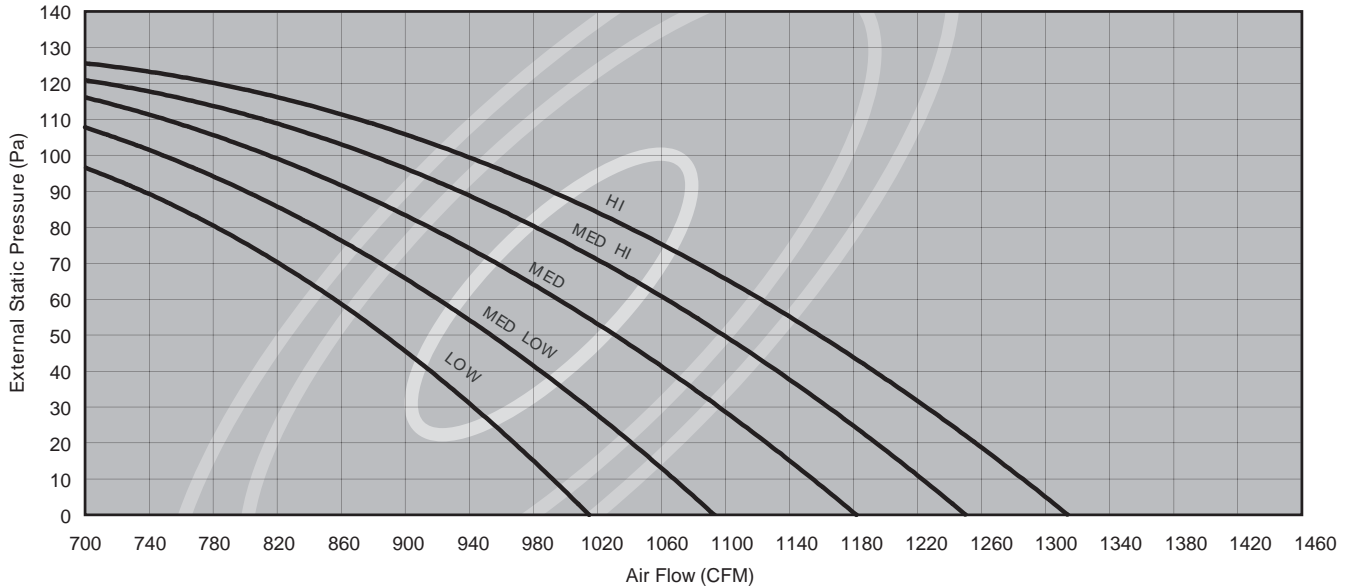
FAN PERFORMANCE DATA

DRY COIL INDOOR FAN CURVE LA-10-6R 50 Hz

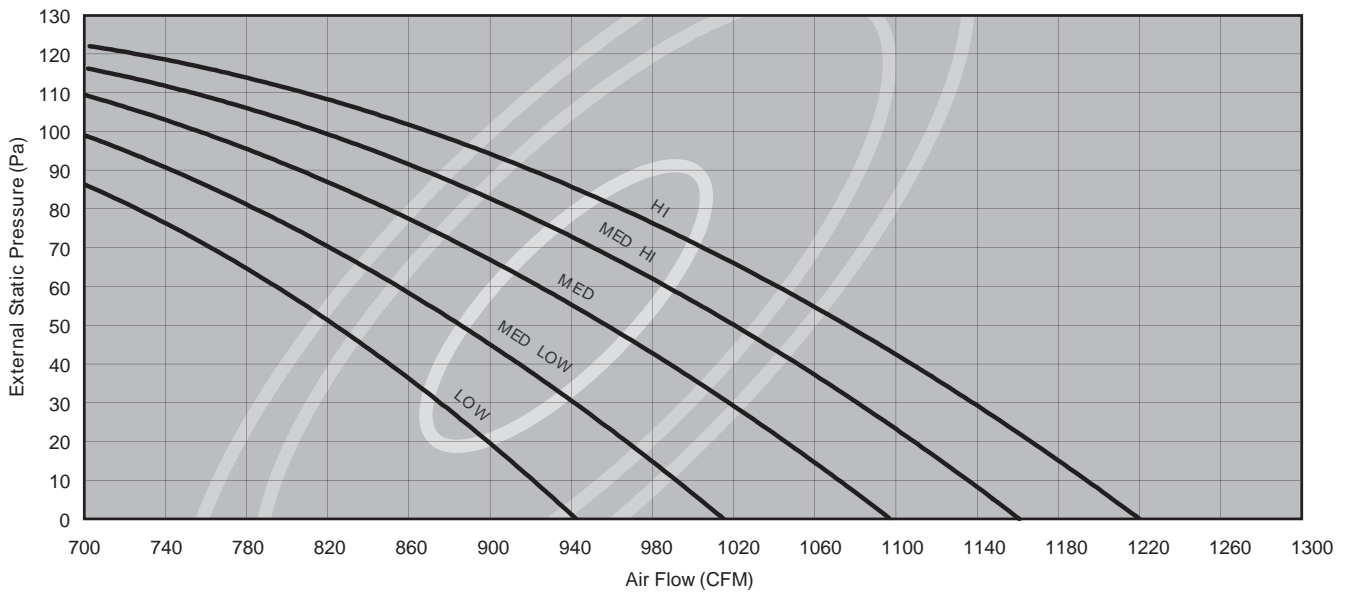


FAN PERFORMANCE DATA

DRY COIL INDOOR FAN CURVE LA-12-4R 50 Hz

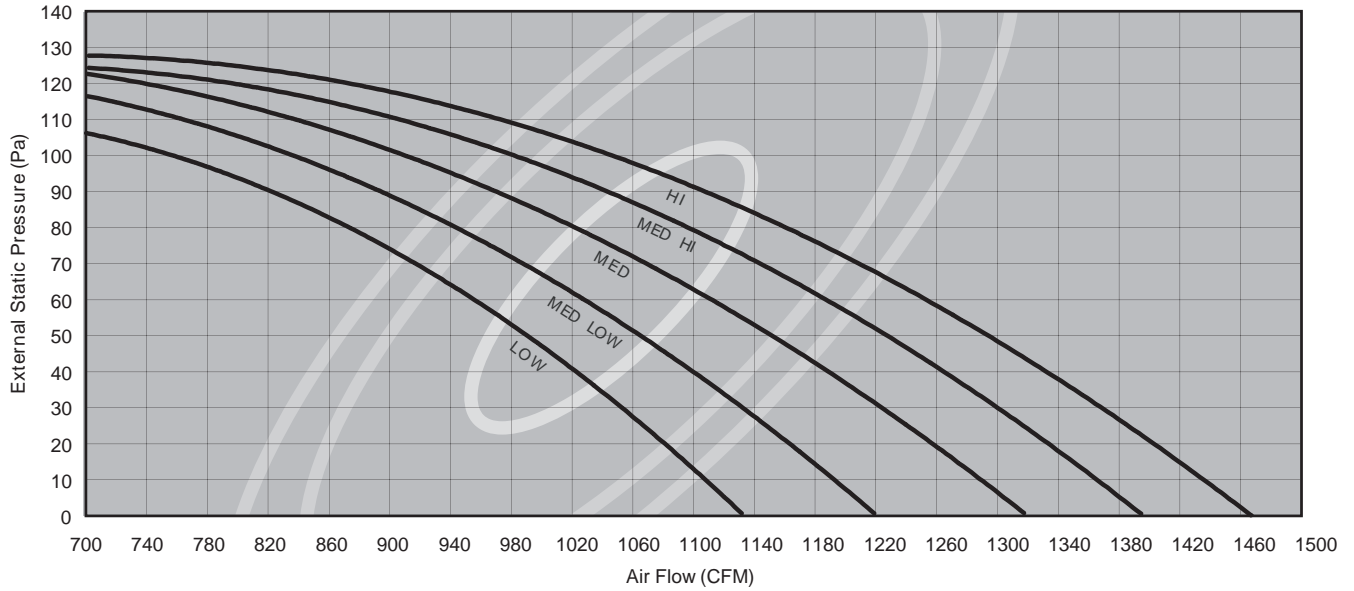


DRY COIL INDOOR FAN CURVE LA-12-6R 50 Hz

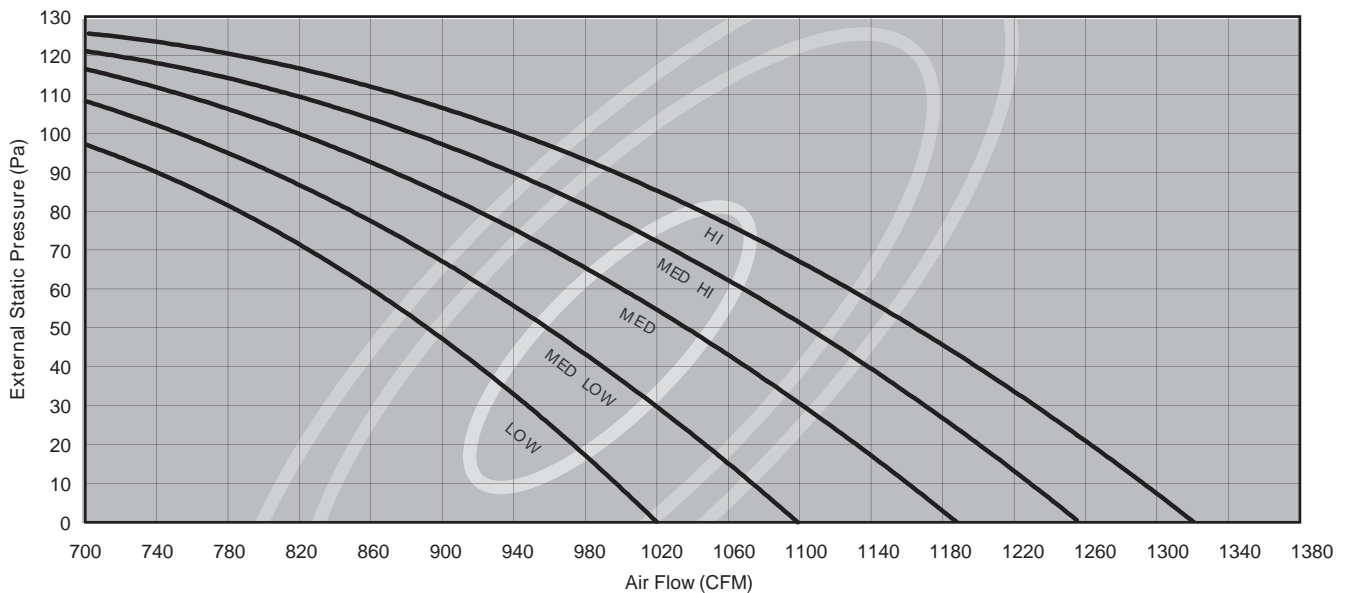


FAN PERFORMANCE DATA

DRY COIL INDOOR FAN CURVE LA-14-4R 50 Hz

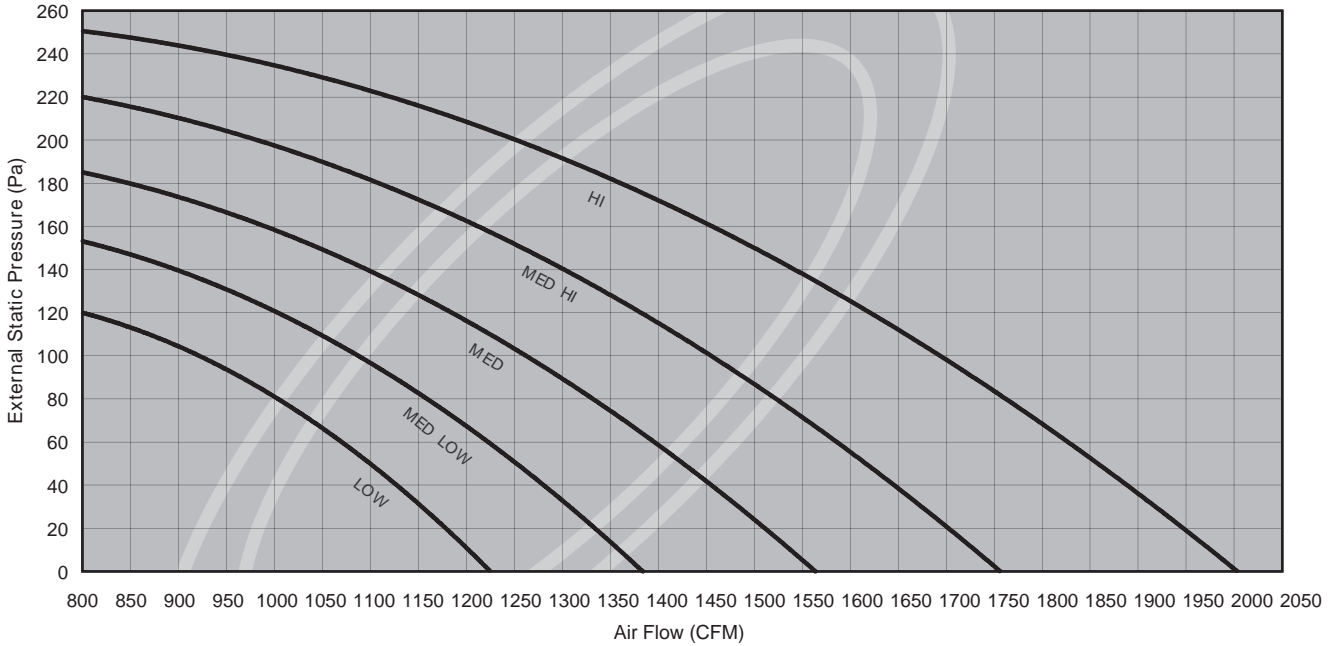


DRY COIL INDOOR FAN CURVE LA-14-6R 50 Hz

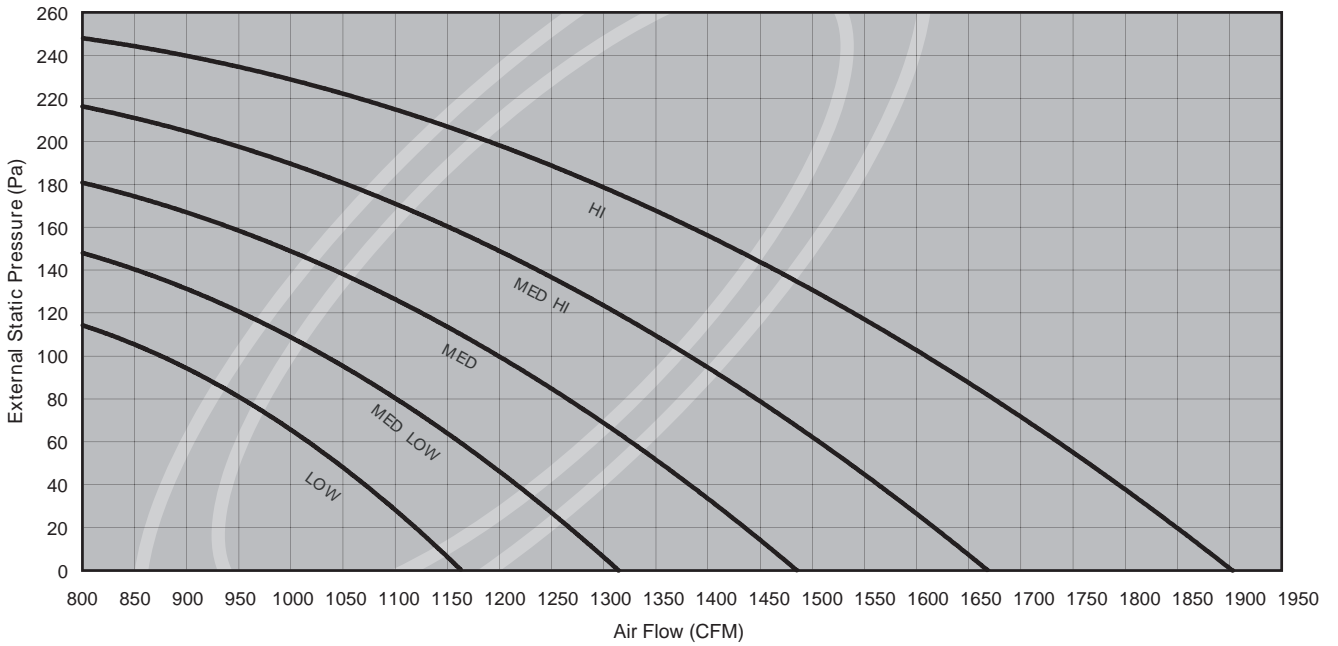


FAN PERFORMANCE DATA

DRY COIL INDOOR FAN CURVE LA-16-4R 50 Hz

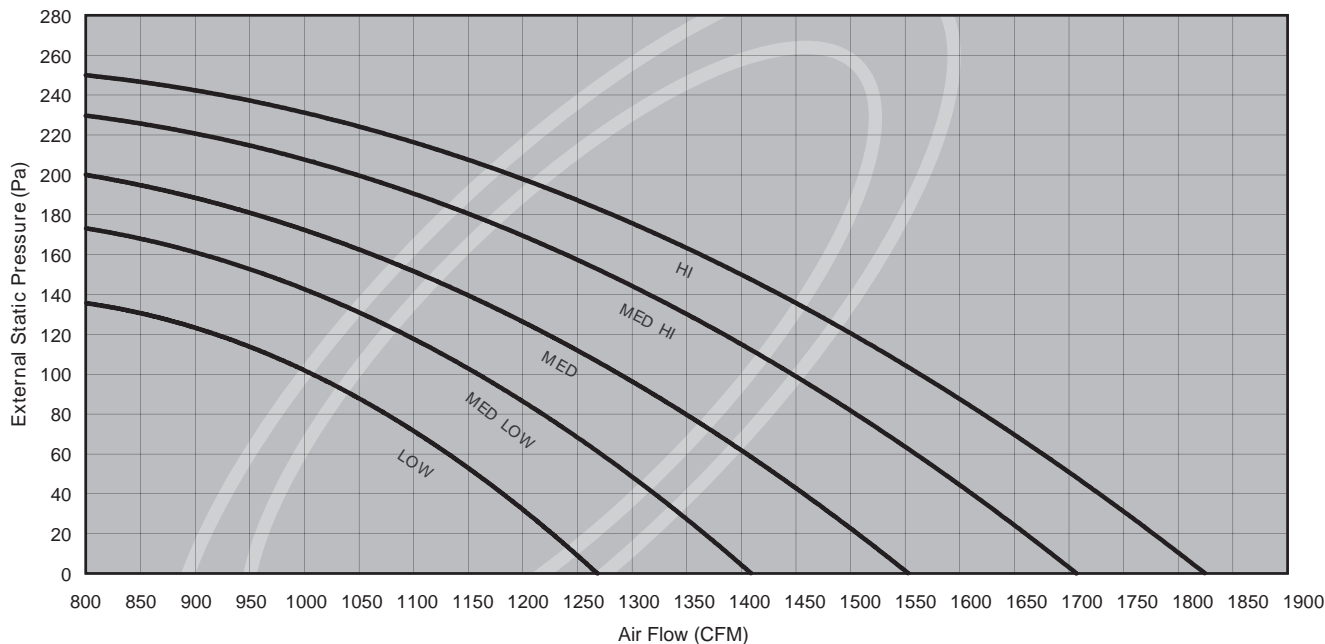


DRY COIL INDOOR FAN CURVE LA-16-6R 50 Hz

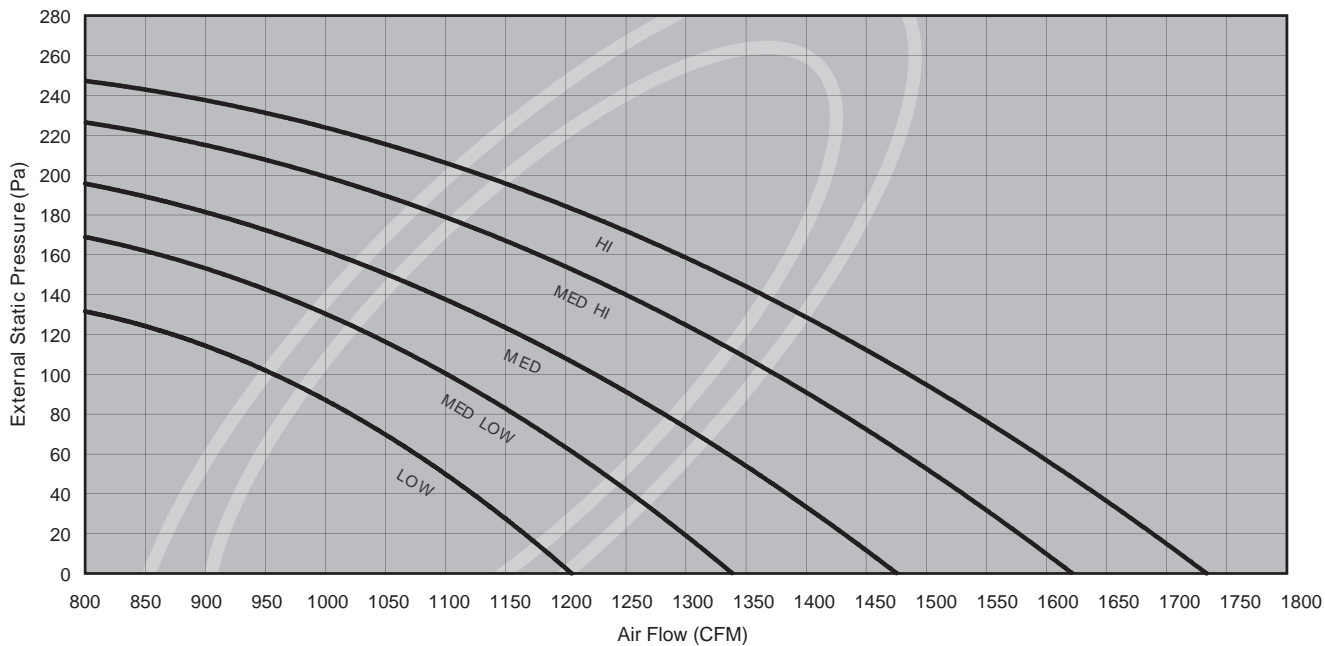


FAN PERFORMANCE DATA

DRY COIL INDOOR FAN CURVE LA-20-4R 50 Hz

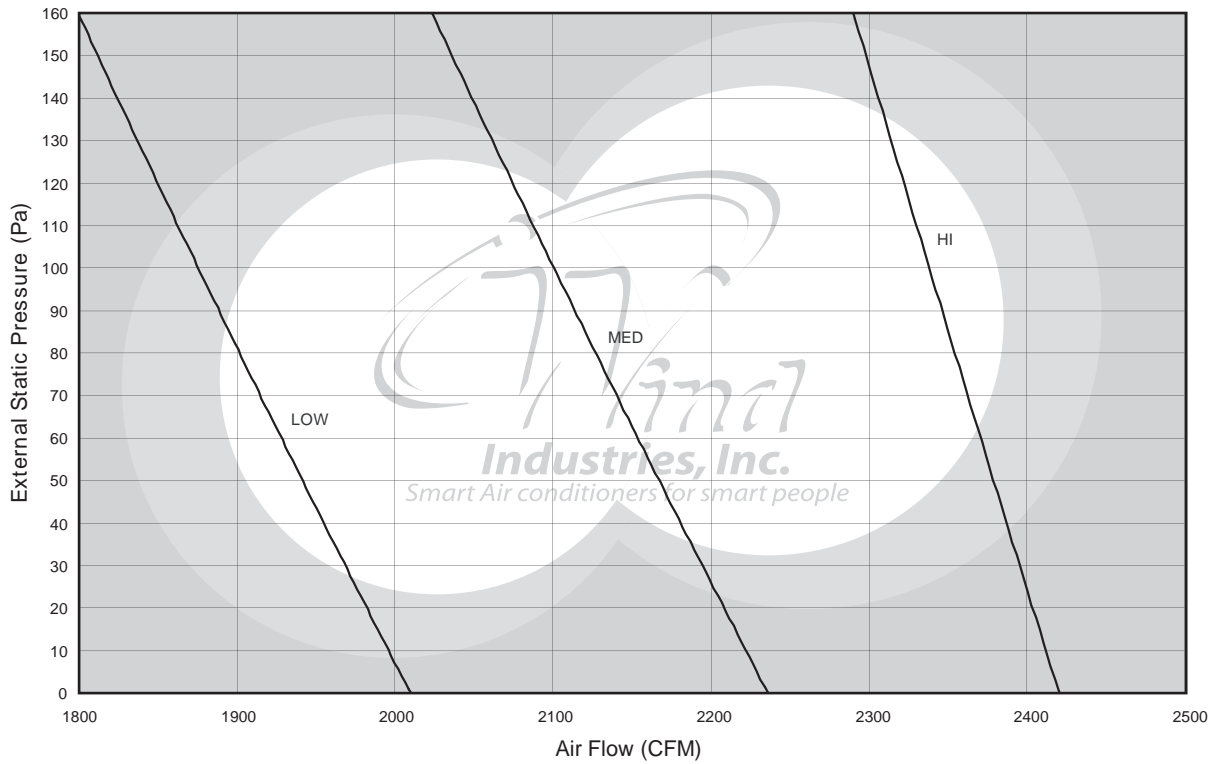


DRY COIL INDOOR FAN CURVE LA-20-6R 50 Hz



FAN PERFORMANCE DATA

DRY COIL INDOOR FAN CURVE LA-25-6R 50 Hz



LA GENERAL SPECIFICATIONS

MODEL		LA-03	LA-04	LA - 06	LA - 08	LA - 10	LA - 12	LA - 14	LA - 16	LA - 20	LA - 25
Power Supply	V/Ph/Hz.	220-240/1/50/60									
Coil		Corrugate fin/Plane tube, Manual air vent on coil									
	Fin/in.	13									
	Tube Side	in. DIA.3/8 Copper tube									
Blower	Type	Centrifugal Forward Direct Drive									
	Dia x L...Qty.	mm.	144x162...2	144x188...2	164x201...2	164x201...2	178x228...2	203x289...2	164x201...4	254x254...2	
Motor		5-Speed ,Mounted with rubber grommets to eliminate noise and vibration (3 Speed model WICA-25)									
	Type	PSC Motor - direct drive									
	Hp.Qty.		1/8...1	1/8...1	1/2...1	1/2...1	1/3...1	1/2...1	1/3...1	1/3...2	1/3...2
	RPM	1380/1300/1200/1040/950	1420/1350/1230/1100/1000	1400/1330/1230/1150/1050	1230/1180/1060/950/800	1400/1340/1220/1020/900	1400/1340/1200/1100/1000	1230/1180/1060/950/800	1280/1180/1080		
Net Weight	Kg	26	29	34	37	41	50	60	70	72	84
Gross Weight	Kg	31	34	39	42	46	55	65	75	77	90
Casing		Galvanized steel (GI)									
Insulation		Closed cell rubber foam / 1/2"									
Cond.Drain connector	DIA.(in)	3/4									

LA COOLING CAPACITY CORRECTION FACTORS

MODEL	LA - 03		LA - 04		LA - 06		LA - 08		LA - 10		LA - 12		LA - 14		LA - 16		LA - 20		LA - 25	
	TH	SH	TH	SH	TH	SH	TH	SH	TH	SH	TH	SH	TH	SH	TH	SH	TH	SH	TH	SH
2400																			1.00	1.00
2200																			0.91	0.91
2000																			0.83	0.83
1800															1.12	1.11	1.08	1.08		
1600													1.09	1.07	1.06	1.05	1.04	1.04		
1400											1.10	1.11	1.04	1.03	1.00	1.00	1.00	1.00		
1200											1.05	1.06	1.00	1.00	0.91	0.93	0.94	0.92		
1000											1.00	1.00	0.91	0.90	0.85	0.81	0.74	0.75		
900									1.13	1.11	0.89	0.90	0.84	0.83						
800									1.07	1.06	0.76	0.74								
700							1.11	1.10	1.00	1.00										
600					1.11	1.10	1.05	1.06	0.91	0.91										
500					1.05	1.05	1.00	1.00	0.85	0.84										
450			1.12	1.11	1.00	1.00	0.92	0.91												
400			1.04	1.04	0.94	0.91	0.87	0.87												
350			1.00	1.00	0.86	0.85														
300	1.10	1.10	0.94	0.92																
250	1.03	1.03	0.83	0.82																
200	1.00	1.00																		
150	0.84	0.82																		
100																				

COOLING CAPACITY (BTUH)

MODEL	42° F ENT. WATER				
	GPM	PD (FT.WTR)	80° F DB/67° F WB		
			TH	SH	TR
LA - 03 2 Rows Coil	1.52	2.26	7619	5010	10
	1.11	1.30	6664	4642	12
	0.81	0.76	5698	4299	14
	0.65	0.50	5075	4061	16
LA - 03 3 Rows Coil	1.84	1.52	9182	5868	10
	1.39	0.91	8361	5524	12
	1.06	0.55	7404	5148	14
	0.97	0.50	7170	5064	16
LA - 03 4 Rows Coil	1.88	0.97	9393	5930	10
	1.51	0.65	9034	5782	12
	1.30	0.50	8668	5626	14
	1.02	0.47	8234	5345	16
LA - 04 2 Rows Coil	2.26	1.60	11296	8110	10
	1.50	0.75	9012	7288	12
	1.12	0.44	7840	6872	14
	0.98	0.37	7840	6872	16
LA - 04 3 Rows Coil	2.76	3.46	13818	9625	10
	2.06	2.12	12387	9086	12
	1.47	1.14	10260	8306	14
	1.07	0.68	8593	7740	16
LA - 04 4 Rows Coil	3.00	2.46	14979	10132	10
	2.18	1.38	13053	9392	12
	1.63	0.85	11431	8760	14
	1.30	0.56	10209	8294	16
LA - 06 3 Rows Coil	3.70	2.93	18496	12676	10
	2.76	1.74	16563	11962	12
	1.99	0.94	13912	10990	14
	1.48	0.56	11837	10239	16
LA - 06 4 Rows Coil	4.00	4.46	19997	13502	10
	2.96	2.63	17737	12615	12
	2.21	1.63	15435	11727	14
	1.52	0.82	12188	10525	16
LA - 06 6 Rows Coil	4.50	8.41	22480	14529	10
	3.69	6.01	22137	14377	12
	2.86	3.85	19998	13473	14
	2.26	2.47	18056	12671	16

MODEL	42° F ENT. WATER				
	GPM	PD (FT.WTR)	75° F DB/63° F WB		
			TH	SH	TR
LA - 03 2 Rows Coil	1.39	1.89	6931	4797	10
	0.97	0.97	5807	4346	12
	0.70	0.55	4890	3977	14
	0.65	0.50	4767	3936	16
LA - 03 3 Rows Coil	1.53	1.09	7646	5313	10
	1.20	0.71	7183	5122	12
	0.98	0.50	6596	4862	14
	0.8	0.36	6400	4718	16
LA - 03 4 Rows Coil	1.65	0.76	8249	5559	10
	1.21	0.44	7235	5099	12
	0.91	0.27	6372	4722	14
	0.65	0.05	5240	4250	16
LA - 04 2 Rows Coil	1.86	1.17	9291	7355	10
	1.25	0.56	7515	6655	12
	1.01	0.37	7096	6523	14
	0.86	0.30	6848	6421	16
LA - 04 3 Rows Coil	2.49	2.91	12463	9169	10
	1.82	1.71	10943	8556	12
	1.29	0.91	9005	7776	14
	1.02	0.56	8128	7442	16
LA - 04 4 Rows Coil	2.71	2.03	13541	9669	10
	1.96	1.14	11737	8903	12
	1.44	0.68	10086	8230	14
	1.19	0.64	9582	7819	16
LA - 06 3 Rows Coil	3.36	2.39	16820	12120	10
	2.44	1.40	14608	11246	12
	1.74	0.75	12197	10298	14
	1.37	0.51	10965	9793	16
LA - 06 4 Rows Coil	3.60	3.71	17998	12850	10
	2.66	2.25	15974	11986	12
	1.89	1.20	13236	10874	14
	1.31	0.62	10357	9728	16
LA - 06 6 Rows Coil	4.29	7.79	21454	14409	10
	3.25	4.72	19518	13526	12
	2.48	3.01	17390	12541	14
	1.66	1.44	13253	10805	16

TH = TOTAL CAPACITY (BTUH)
 SH = SENSIBLE HEAT CAPACITY (BTUH)
 TR = TEMPRISE

COOLING CAPACITY (BTUH)

MODEL	42° F ENT. WATER				
	GPM	PD (FT.WTR)	80° F DB/67° F WB		
			TH	SH	TR
LA - 08 3 Rows Coil	4.36	10.03	21782	14763	10
	3.32	6.20	19924	14089	12
	2.55	3.84	17860	13303	14
	1.89	2.28	15141	12334	16
LA - 08 4 Rows Coil	4.63	6.68	23159	15425	10
	3.50	4.12	20994	14598	12
	2.73	2.70	19081	13834	14
	2.01	1.56	16068	12719	16
LA - 08 6 Rows Coil	5.06	6.36	25301	16303	10
	4.12	4.30	24817	16078	12
	3.17	2.87	22206	14989	14
	2.52	1.88	20163	14158	16
LA - 10 3 Rows Coil	5.62	4.22	28105	19164	10
	4.24	2.55	25455	18149	12
	3.15	1.51	22033	16909	14
	2.26	0.82	18091	15481	16
LA - 10 4 Rows Coil	6.02	3.91	30176	20597	10
	4.55	2.32	27294	19463	12
	3.39	1.38	23718	18167	14
	2.52	0.81	20174	16806	16
LA - 10 6 Rows Coil	7.47	8.51	37329	24329	10
	5.79	5.44	34747	23209	12
	4.61	3.66	32266	22194	14
	3.71	2.57	29680	21162	16
LA - 12 4 Rows Coil	7.98	12.48	39919	27074	10
	6.20	7.86	37215	26052	12
	4.75	4.88	33268	24531	14
	3.73	3.27	29714	23201	16
LA - 12 6 Rows Coil	8.75	5.90	43737	28821	10
	6.83	3.75	40989	27629	12
	5.36	2.53	37493	26225	14
	4.12	1.52	32986	24438	16
LA - 14 4 Rows Coil	9.03	5.13	45142	30054	10
	6.81	3.10	40884	28340	12
	5.31	2.09	37171	26899	14
	3.81	1.12	30505	24365	16

MODEL	42° F ENT. WATER				
	GPM	PD (FT.WTR)	75° F DB/63° F WB		
			TH	SH	TR
LA - 08 3 Rows Coil	3.99	8.62	19950	14194	10
	3.02	5.27	18114	13478	12
	2.28	3.13	15936	12580	14
	1.66	1.87	13290	11541	16
LA - 08 4 Rows Coil	4.21	5.74	21037	14794	10
	3.19	3.46	19168	13967	12
	2.45	2.17	17130	13166	14
	1.69	1.16	13520	11662	16
LA - 08 6 Rows Coil	4.76	5.65	23780	15989	10
	3.71	3.65	22264	15270	12
	2.85	2.37	20028	14270	14
	2.32	1.58	18522	13585	16
LA - 10 3 Rows Coil	5.25	3.71	26274	18645	10
	3.81	2.15	22885	17255	12
	2.82	1.24	19740	16015	14
	2.11	0.77	16915	14868	16
LA - 10 4 Rows Coil	5.76	3.58	28806	20307	10
	4.39	2.24	26343	19226	12
	3.10	1.16	21705	17331	14
	2.23	0.64	17863	15117	16
LA - 10 6 Rows Coil	7.03	7.74	35126	23853	10
	5.32	4.66	31932	22383	12
	4.20	3.17	29405	21264	14
	3.08	1.76	24613	19217	16
LA - 12 4 Rows Coil	7.32	10.67	36621	26044	10
	5.65	6.63	33919	24951	12
	4.33	4.15	30310	23430	14
	3.15	2.37	25266	21435	16
LA - 12 6 Rows Coil	8.23	5.29	41134	28247	10
	6.27	3.27	37643	26672	12
	4.82	2.12	33814	24992	14
	3.46	1.13	27679	22375	16
LA - 14 4 Rows Coil	8.72	4.88	43608	29893	10
	6.47	2.88	38848	27807	12
	4.90	1.75	34310	25969	14
	3.66	1.06	29242	23882	16

TH = TOTAL CAPACITY (BTUH)
 SH = SENSIBLE HEAT CAPACITY (BTUH)
 TR = TEMPRISE

COOLING CAPACITY (BTUH)

MODEL	42° F ENT. WATER				
	GPM	PD (FT.WTR)	80° F DB/67° F WB		
			TH	SH	TR
LA - 14 6 Rows Coil	9.77	9.03	48826	31581	10
	7.62	5.74	45714	30329	12
	6.16	3.97	43124	29189	14
	4.89	2.66	39098	27601	16
LA - 16 4 Rows Coil	11.99	16.20	59954	39856	10
	7.28	6.78	50936	36278	12
	7.14	6.40	49945	54949	14
	5.57	4.20	44589	33947	16
LA - 16 6 Rows Coil	12.76	6.07	63811	41722	10
	9.89	3.78	59363	39891	12
	7.95	2.63	55624	38360	14
	6.33	1.76	50646	36378	16
LA - 20 4 Rows Coil	13.1	2.98	65492	43216	10
	9.79	1.84	58771	40557	12
	7.21	1.02	50486	37338	14
	5.36	0.61	42878	34503	16
LA - 20 6 Rows Coil	13.88	5.12	69414	45218	10
	10.74	3.24	64442	43158	12
	8.55	2.17	59839	41195	14
	6.70	1.38	53634	38749	16
LA - 25 6 Rows Coil	25.86	9.38	129317	80404	10
	21.17	6.54	127021	79477	12
	17.00	4.47	119013	75922	14
	14.25	3.19	113988	73707	16

MODEL	42° F ENT. WATER				
	GPM	PD (FT.WTR)	75° F DB/63° F WB		
			TH	SH	TR
LA - 14 6 Rows Coil	9.19	8.19	45967	31078	10
	7.15	5.23	42901	29647	12
	5.62	3.44	39306	28059	14
	4.41	2.29	35304	26293	16
LA - 16 4 Rows Coil	10.86	13.75	54290	38162	10
	8.34	8.53	50012	36323	12
	6.50	5.52	45490	34386	14
	4.94	3.41	39614	31957	16
LA - 16 6 Rows Coil	12.22	5.58	61087	41437	10
	9.25	3.43	55508	38825	12
	7.29	2.30	51057	36843	14
	5.73	1.46	45813	34621	16
LA - 20 4 Rows Coil	12.77	2.89	63867	43667	10
	9.44	1.7	56614	40495	12
	6.94	0.96	48547	37038	14
	5.07	0.57	40603	33866	16
LA - 20 6 Rows Coil	13.04	4.54	65184	44326	10
	10.16	2.91	60954	42428	12
	7.71	1.87	53971	39306	14
	6.05	1.16	48343	36860	16
LA - 25 6 Rows Coil	21.84	6.86	109213	72581	10
	17.88	4.88	107274	71654	12
	14.63	3.30	100511	68511	14
	12.03	2.47	96267	66657	16

TH = TOTAL CAPACITY (BTUH)
 SH = SENSIBLE HEAT CAPACITY (BTUH)
 TR = TEMPRISE

COOLING CAPACITY (BTUH)

MODEL	45° F ENT. WATER				
	GPM	PD (FT.WTR)	80° F DB/67° F WB		
			TH	SH	TR
LA - 03 2 Rows Coil	1.26	1.66	6312	4517	10
	0.85	0.81	5129	4102	12
	0.58	0.42	4082	3714	14
	0.49	0.30	3891	3584	16
LA - 03 3 Rows Coil	1.44	0.97	7200	5074	10
	0.96	0.48	5772	4540	12
	0.70	0.29	4910	4214	14
	0.58	0.27	4665	4003	16
LA - 03 4 Rows Coil	1.49	0.65	7475	5126	10
	1.03	0.33	6170	4613	12
	0.73	0.31	5862	4382	14
	0.69	0.29	5568	4163	16
LA - 04 2 Rows Coil	1.79	1.06	8931	7268	10
	1.15	0.48	6898	6557	12
	0.95	0.34	6657	6455	14
	0.83	0.28	6657	6455	16
LA - 04 3 Rows Coil	2.43	2.80	12138	8975	10
	1.69	1.46	10127	8278	12
	1.14	0.73	7998	7489	14
	0.94	0.53	7484	7350	16
LA - 04 4 Rows Coil	2.78	2.12	13908	9699	10
	2.00	1.14	11958	8951	12
	1.44	0.68	10103	8286	14
	1.04	0.39	8334	7620	16
LA - 06 3 Rows Coil	3.08	2.09	15477	11568	10
	2.23	1.20	13374	10768	12
	1.53	0.60	10688	9845	14
	1.26	0.43	10042	9598	16
LA - 06 4 Rows Coil	3.43	3.35	17146	12379	10
	2.51	1.98	15069	11592	12
	1.71	1.01	11950	10469	14
	1.42	0.96	11352	9946	16
LA - 06 6 Rows Coil	4.14	7.18	20676	13768	10
	3.05	4.28	18290	12803	12
	2.38	2.74	16649	12143	14
	1.59	1.34	12645	10620	16

MODEL	45° F ENT. WATER				
	GPM	PD (FT.WTR)	75° F DB/63° F WB		
			TH	SH	TR
LA - 03 2 Rows Coil	1.07	1.23	5341	4154	10
	0.70	0.55	4176	3713	12
	0.51	0.33	3539	3480	14
	0.44	0.25	3539	3480	16
LA - 03 3 Rows Coil	1.24	0.76	6216	4714	10
	0.86	0.41	5184	4296	12
	0.70	0.38	4925	4081	14
	0.58	0.36	4679	3877	16
LA - 03 4 Rows Coil	1.31	0.50	6537	4791	10
	0.89	0.25	5357	4299	12
	0.73	0.23	5089	4084	14
	0.60	0.22	4843	3879	16
LA - 04 2 Rows Coil	1.48	0.75	7398	6634	10
	0.07	0.44	6417	6279	12
	0.88	0.31	6192	6177	14
	0.78	0.25	6192	6177	16
LA - 04 3 Rows Coil	2.24	2.46	11188	8649	10
	1.52	1.22	9112	7813	12
	1.07	0.62	7456	7209	14
	0.90	0.49	7195	7116	16
LA - 04 4 Rows Coil	2.48	1.79	12392	9161	10
	1.71	0.91	10260	8288	12
	1.18	0.47	8237	7498	14
	1.05	0.39	7709	7290	14.7
LA - 06 3 Rows Coil	2.68	1.67	13395	10778	10
	1.87	0.84	11204	9916	12
	1.36	0.46	9512	9239	14
	1.15	0.38	9179	9116	16
LA - 06 4 Rows Coil	3.01	2.73	15064	11604	10
	2.05	1.36	12294	10480	12
	1.36	0.62	9510	9413	14
	1.12	0.58	9035	8942	16
LA - 06 6 Rows Coil	3.81	6.19	19065	13282	10
	2.71	3.42	16241	12064	12
	1.81	1.63	12656	10541	14
	1.50	1.54	12023	10013	16

TH = TOTAL CAPACITY (BTUH)

SH = SENSIBLE HEAT CAPACITY (BTUH)

TR = TEMPRISE

COOLING CAPACITY (BTUH)

MODEL	45° F ENT. WATER				
	GPM	PD (FT.WTR)	80° F DB/67° F WB		
			TH	SH	TR
LA - 08 3 Rows Coil	3.94	8.42	19704	14019	10
	2.92	4.96	17522	13177	12
	2.19	3.02	15309	12404	14
	1.60	1.76	12826	11492	16
LA - 08 4 Rows Coil	4.32	5.89	21612	14798	10
	3.28	3.57	19659	14047	12
	2.46	2.28	17220	13107	14
	1.51	0.94	12103	11290	16
LA - 08 6 Rows Coil	4.65	5.48	23264	15427	10
	3.47	3.25	20810	14416	12
	2.49	1.76	17463	13068	14
	1.69	0.86	13526	11608	16
LA - 10 3 Rows Coil	5.37	3.91	26825	18638	10
	4.01	2.30	24060	17604	12
	3.03	1.44	21228	16571	14
	2.16	0.77	17270	15255	16
LA - 10 4 Rows Coil	5.76	3.58	28802	20083	10
	4.27	2.16	25647	18843	12
	3.18	1.23	22240	17603	14
	2.05	0.58	16392	15478	16
LA - 10 6 Rows Coil	6.9	7.54	34494	23069	10
	5.18	4.50	31084	21757	12
	3.94	2.80	27583	20357	14
	2.51	1.23	20092	17558	16
LA - 12 4 Rows Coil	7.23	10.46	36140	25672	10
	5.56	6.47	33332	24603	12
	4.12	3.72	28903	22940	14
	2.89	2.05	23160	20920	16
LA - 12 6 Rows Coil	8.07	5.14	40338	27353	10
	5.89	2.95	35363	25331	12
	4.37	1.72	30622	23523	14
	2.77	0.77	22151	20438	16
LA - 14 4 Rows Coil	8.42	4.63	42105	28812	10
	6.32	2.70	37906	27197	12
	4.56	1.59	31925	24961	14
	3.02	0.76	24189	22105	16

MODEL	45° F ENT. WATER				
	GPM	PD (FT.WTR)	75° F DB/63° F WB		
			TH	SH	TR
LA - 08 3 Rows Coil	3.22	2.56	16080	12622	10
	2.35	1.54	14087	11850	12
	1.60	0.75	11200	10727	14
	1.35	0.53	10827	10586	16
LA - 08 4 Rows Coil	3.89	4.96	19464	14118	10
	2.73	2.70	16380	12802	12
	1.90	1.38	13327	11612	14
	1.33	0.71	10646	10547	16
LA - 08 6 Rows Coil	4.19	4.47	20961	14664	10
	3.06	2.62	18367	13540	12
	2.12	1.40	14821	12024	14
	2.01	1.33	14079	11422	16
LA - 10 3 Rows Coil	5.16	15.26	25776	18382	10
	3.85	9.08	23080	17349	12
	2.96	5.78	20737	16409	14
	2.25	3.54	17971	15282	16
LA - 10 4 Rows Coil	5.39	3.16	26967	19492	10
	4.03	1.92	24180	18340	12
	2.71	0.92	18983	16215	14
	1.92	0.51	15353	14798	16
LA - 10 6 Rows Coil	6.36	6.48	31813	22331	10
	4.54	3.54	27226	20319	12
	3.05	1.76	21385	17869	14
	1.98	0.81	15833	15682	16
LA - 12 4 Rows Coil	6.56	8.78	32814	24428	10
	4.90	5.17	29420	23121	12
	3.49	2.93	24406	21102	14
	2.51	1.63	20107	19439	16
LA - 12 6 Rows Coil	7.44	4.43	37196	26460	10
	5.25	2.42	31478	24013	12
	3.65	1.28	25584	21566	14
	2.54	0.65	18981	18907	15
LA - 14 4 Rows Coil	7.86	4.00	39302	27981	10
	5.61	2.26	33687	25621	12
	4.00	1.18	28033	23385	14
	2.77	0.64	22128	21025	16

TH = TOTAL CAPACITY (BTUH)
 SH = SENSIBLE HEAT CAPACITY (BTUH)
 TR = TEMPRISE

COOLING CAPACITY (BTUH)

MODEL	45° F ENT. WATER				
	GPM	PD (FT.WTR)	80° F DB/67° F WB		
			TH	SH	TR
LA - 14 6 Rows Coil	9.09	7.98	45425	30128	10
	6.81	4.71	40865	28339	12
	5.24	3.04	36714	26662	14
	3.38	1.42	27058	22974	16
LA - 16 4 Rows Coil	10.82	13.75	54096	37492	10
	8.23	8.32	49373	35687	12
	6.20	5.01	43393	33388	14
	4.42	2.76	35320	30598	16
LA - 16 6 Rows Coil	11.98	5.42	59905	40011	10
	8.84	3.20	53070	37309	12
	6.53	1.87	45685	34456	14
	3.81	0.73	30497	28752	16
LA - 20 4 Rows Coil	12.93	2.98	64649	42866	10
	9.34	1.70	56032	39542	12
	6.85	0.96	47922	36393	14
	4.49	0.45	35915	32019	16
LA - 20 6 Rows Coil	13.84	5.12	69177	45178	10
	10.42	3.02	62489	42424	12
	7.74	1.87	54194	39022	14
	5.23	0.94	41845	34324	16
LA - 25 6 Rows Coil	23.61	8.03	118082	75304	10
	19.33	5.62	115984	74531	12
	15.52	3.80	108672	71440	14
	13.01	2.78	104084	69380	16

MODEL	45° F ENT. WATER				
	GPM	PD (FT.WTR)	75° F DB/63° F WB		
			TH	SH	TR
LA - 14 6 Rows Coil	8.38	6.84	41894	29177	10
	5.96	3.84	35759	26495	12
	4.06	1.91	28422	23365	14
	2.60	0.87	20803	20347	16
LA - 16 4 Rows Coil	9.73	11.21	48663	35732	10
	7.34	6.78	44049	33762	12
	5.45	4.07	38158	31464	14
	3.54	1.89	28338	27524	16
LA - 16 6 Rows Coil	11.05	4.66	55239	38735	10
	7.73	2.52	46371	34831	12
	5.18	1.23	36282	30628	14
	4.30	1.16	34468	29096	16
LA - 20 4 Rows Coil	12.45	4.12	62258	42986	10
	8.97	2.38	53809	39260	12
	6.63	1.38	46407	36182	14
	3.90	0.56	31140	30026	16
LA - 20 6 Rows Coil	13.01	4.54	65031	44282	10
	9.52	2.70	57105	40718	12
	6.82	1.46	47716	36668	14
	4.15	0.60	33167	30674	16
LA - 25 6 Rows Coil	19.76	5.77	98803	67790	10
	16.17	4.07	97048	67017	12
	12.99	2.78	90930	64184	14
	10.89	2.07	87091	62638	16

TH = TOTAL CAPACITY (BTUH)
 SH = SENSIBLE HEAT CAPACITY (BTUH)
 TR = TEMPRISE





P.O.Box 741074 - Dallas, Texas 75374 USA

Tel. +972 563 9289 - Fax. +972 563 5783

Email : info@windind.com

www.windind.com