

Wind Industries, Inc.

Smart AirConditioners for Smart People

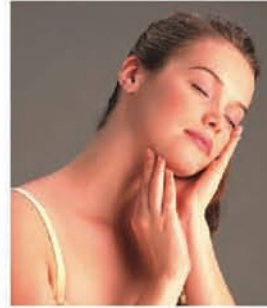


Wall Mounted Mini Splits



Strong Cool

Equipped with compressors and motors made by renowned manufacturers; able to bring along a cool experience to you at the quickest speed.



Quiet Operation

Both the indoor and outdoor units are designed with a consummate operating mechanism (i.e. Sound insulating cotton for the compressor, and lower-noise motor), which minimizes their noises, so as to allow you to enjoy a cooled-down living space, despite of the sizzling heat outside.



Sleep Mode

Under the refrigerating mode, when you set the air-conditioner at its Sleep function, the temperature will rise for twice as the indoor temperature drops (inversely under the heating mode). This function ensures you to have a sound sleep, without suffering an under-cooling or over-heating experience at night.



Auto Restart Function

After being turned off or in case of an accidental power cut, Wind air-conditioners are able to retain and restore the temperature and other settings, until being turned on or the power supply is resumed.



Two-direction Airflow (Cooling&Heating Only)

As the cold air indoors is prone to fall down, and the hot air indoors is easily likely to rise, Wind air-conditioners send cold wind upwards and hot wind downwards, thus to guarantee the entire space at your home to be cooled or heated evenly (of course, you can control the wind blowing direction via the remote controller).



Independent Dehumidification

The independent dehumidifying function is able to keep your clothes dry even if the weather gets humid, thus freeing you from worries.



Easy-clean Panel & Filters

After being used for a certain period of time, the filter shall be cleaned. The face plates and filter of various kinds of Wind air-conditioners are all easy to dismantle and cleanse. You can clean the dust accumulated on the panel and filter by use of clean water quite easily, to restore a clean appearance of your air conditioner.

For your information: period to cleansing, be sure that you have switched off the air conditioner; when dismantling the panel, please refer to the Users' Manual.



Low Voltage Startup

Designed with a wide voltage range, Wind air conditioners are able to work normally even if the voltage between 187-240 volts.

ISO9001 ISO14001 OSH18001





Luminant Display*

We provide multiple kinds of LED indicators on the remote controller for your free option.



Anti-Cold Air Function

In heating mode, the fan speed is controlled according to the evaporator temperature. Only when the evaporator is warm enough, the cross fan begins to run, preventing any cold blasting.



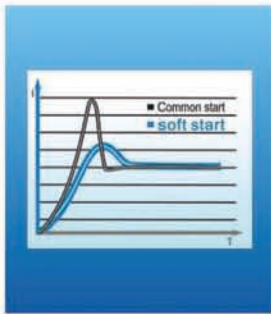
Flexible Wiring Connection

The terminal block makes the cable connecting flexible and easy.



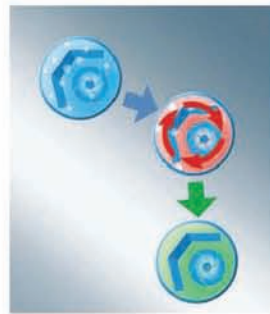
Auto-protection Function

With Auto-protection function, errors will be detected by the PCB and displayed by LED on the indoor unit. Protection will then be taken.



Soft-starter Kit*

The starting current can be limited within 45A by the Soft-starter Kit, which is particularly designed for some countries such as Australia.



Anti-Mildew

After shutting off, the cross fan still runs 3 additional minutes. Therefore, humidification in the indoor unit will be dried. There is no chance for mildew to form.



Large LED Display*

A circular LED display is installed on some new productions. The status of the room can be viewed at a glance.



Valve Protection Cover*

This cover protects the valves from water dripping.



HAF Filter*

Photocatalyst Filter*

Catechin Filter*

Vitamin-enriching Filter*

Active Carbon Filter*

Nano Silver Filter*

TIT ANGOLD (TiO₂ Fin*)



HAF Filter*

The HAF filter is the product of the 3M company, which absorbs particles and odors in the air.



Active Carbon Filter*

Absorbing particles and odors in the air.

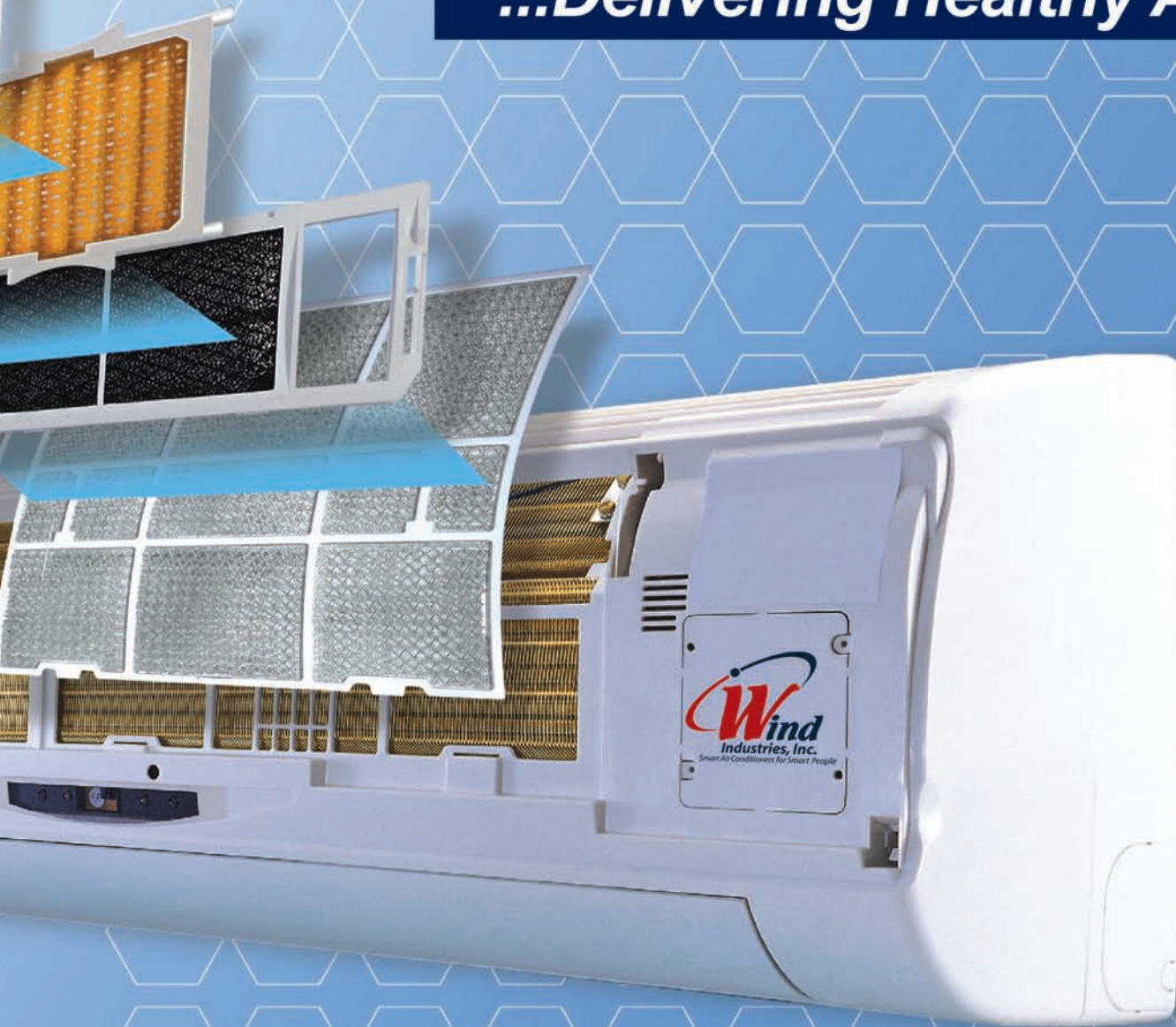


Catechin Filter*

Deactivating bacterium, decomposing unpleasant odors.

Wind Air Conditioners

...Delivering Healthy Air



Photocatalyst Filter*

Oxidizing organic compounds and some inorganic matter.



Vitamin-enriching Filter*



Nano Silver Filter*

R22- Classic Series (220V-50Hz-T1)

| Model | | WT007CIARN | WT009CIARN | WT012CIARN | WT018CIARN | WT024CIARN | WT030CIARN |
|---|--------------------------|----------------|----------------|----------------|----------------|----------------|----------------|
| Capacity | | | | | | | |
| Cooling | Btu/h | 7000 | 9000 | 12000 | 18000 | 24000 | 30000 |
| | KW | 2.05 | 2.64 | 3.52 | 5.28 | 7.03 | 8.8 |
| Electrica Date | | | | | | | |
| Voltage, Frequency, Phase | V-, Hz, Ph | 220~240, 50, 1 | 220~240, 50, 1 | 220~240, 50, 1 | 220~240, 50, 1 | 220~240, 50, 1 | 220~240, 50, 1 |
| Power Input | Cooling W | 780 | 1010 | 1330 | 1970 | 2640 | 3500 |
| Operating Current | Cooling A | 3.6 | 4.6 | 6 | 9 | 12 | 16 |
| Performance | | | | | | | |
| EER | Btu/W.h, W/W | 8.97;2.63 | 8.94;2.62 | 9.01;2.64 | 9.14;2.68 | 9.08;2.66 | 8.5;2.5 |
| Dehumidifying volume | L/h | 0.5 | 0.8 | 1 | 1.5 | 2 | 2.5 |
| Air Flow Volume | Indoor m ³ /h | 430 | 430 | 530 | 800 | 1100 | 1200 |
| Noise Level | Indoor(Hi/Med/Lo) dB(A) | 35/32/29 | 35/32/29 | 37/34/32 | 42/39/36 | 49/46/42 | 52/48/45 |
| | Outdoor dB(A) | 50 | 50 | 52 | 58 | 60 | 62 |
| Net Dimension & Weight | | | | | | | |
| Indoor unit | W×H×D mm | 718×240×180 | 718×240×180 | 770×240×180 | 898×280×202 | 898×280×202 | 1240×325×250 |
| Outdoor unit | W×H×D mm | 600×500×232 | 600×500×232 | 700×552×256 | 820×605×300 | 820×605×300 | 902×650×307 |
| Net Weight | Indoor/Outdoor kg | 7/22 | 7/23 | 8/30 | 11/40 | 11/48 | 18/59 |
| Packing Dimension & Gross Weight | | | | | | | |
| Indoor unit | W×H×D mm | 805×305×255 | 805×305×255 | 855×305×255 | 995×365×298 | 995×365×298 | 1317×422×338 |
| Outdoor unit | W×H×D mm | 745×542×353 | 745×542×353 | 803×598×380 | 965×650×438 | 965×650×438 | 1027×705×433 |
| Gross Weight | Indoor/Outdoor kg | 9/25 | 9/26 | 10/34 | 14/44 | 14/53 | 25/65 |
| Piping Connetion | | | | | | | |
| Liquid Side | mm(inch) | Φ6(1/4") | Φ6(1/4") | Φ6(1/4") | Φ6(1/4") | Φ9.52(3/8") | Φ9.52(3/8") |
| Gas Side | mm(inch) | Φ9.52(3/8") | Φ9.52(3/8") | Φ12(1/2") | Φ12(1/2") | Φ15.88(5/8") | Φ15.88(5/8") |
| Applicable Area | | | | | | | |
| | m ² | 6~10 | 9~16 | 15~23 | 20~35 | 30~50 | 50~70 |
| Stuffing Quantity | | | | | | | |
| 20'/40'/40'HQ | Set | 132/277/310 | 132/277/310 | 102/230/265 | 75/160/173 | 75/160/173 | 51/111/115 |

R22- Classic Series (220V-50Hz-T1)

| Model | | WT007HIARN | WT009HIARN | WT012HIARN | WT018HIARN | WT024HIARN | WT030HIARN |
|---|--------------------------|----------------|----------------|----------------|----------------|----------------|----------------|
| Capacity | | | | | | | |
| Cooling/Heating | Btu/h | 7000/7200 | 9000/9500 | 12000/12800 | 18000/19000 | 24000/24500 | 30000/32000 |
| | KW | 2.05/2.11 | 2.64/2.78 | 3.52/3.75 | 5.28/5.57 | 7.03/7.18 | 8.8/9.4 |
| Electrica Date | | | | | | | |
| Voltage, Frequency, Phase | V-, Hz, Ph | 220~240, 50, 1 | 220~240, 50, 1 | 220~240, 50, 1 | 220~240, 50, 1 | 220~240, 50, 1 | 220~240, 50, 1 |
| Power Input | Cooling/Heating W | 780/730 | 1010/1060 | 1200/1270 | 2000/1970 | 2640/2680 | 3500/3300 |
| Operating Current | Cooling/Heating A | 3.6/3.3 | 4.6/4.8 | 5.6/5.9 | 9.1/9.0 | 12/12.2 | 16/15 |
| Performance | | | | | | | |
| EER | Btu/W.h, W/W | 8.97;2.63 | 8.94;2.62 | 9.01;2.64 | 9.14;2.68 | 9.08;2.66 | 8.5;2.5 |
| COP | W/W | 2.89 | 2.63 | 2.75 | 2.75 | 2.68 | 2.84 |
| Dehumidifying volume | L/h | 0.5 | 0.8 | 1 | 1.5 | 2 | 2.5 |
| Air Flow Volume | Indoor m ³ /h | 430 | 430 | 530 | 800/850 | 1100 | 1200 |
| Noise Level | Indoor(Hi/Med/Lo) dB(A) | 35/32/29 | 35/32/29 | 37/34/32 | 42/39/36 | 49/46/42 | 52/48/45 |
| | Outdoor dB(A) | 50 | 50 | 52 | 58 | 60 | 62 |
| Net Dimension & Weight | | | | | | | |
| Indoor unit | W×H×D mm | 718×240×180 | 718×240×180 | 770×240×180 | 898×280×202 | 898×280×202 | 1240×325×250 |
| Outdoor unit | W×H×D mm | 600×500×232 | 600×500×232 | 700×552×256 | 820×605×300 | 820×605×300 | 902×650×307 |
| Net Weight | Indoor/Outdoor kg | 7/23 | 7/24 | 8/31 | 11/41 | 11/49 | 18/60 |
| Packing Dimension & Gross Weight | | | | | | | |
| Indoor unit | W×H×D mm | 805×305×255 | 805×305×255 | 855×305×255 | 995×365×298 | 995×365×298 | 1317×422×338 |
| Outdoor unit | W×H×D mm | 745×542×353 | 745×542×353 | 803×598×380 | 965×650×438 | 965×650×438 | 1027×705×433 |
| Gross Weight | Indoor/Outdoor kg | 9/26 | 9/27 | 10/35 | 14/45 | 14/53 | 25/66 |
| Piping Connetion | | | | | | | |
| Liquid Side | mm(inch) | Φ6(1/4") | Φ6(1/4") | Φ6(1/4") | Φ6(1/4") | Φ9.52(3/8") | Φ9.52(3/8") |
| Gas Side | mm(inch) | Φ9.52(3/8") | Φ9.52(3/8") | Φ12(1/2") | Φ12(1/2") | Φ15.88(5/8") | Φ15.88(5/8") |
| Applicable Area | | | | | | | |
| | m ² | 6~10 | 9~16 | 15~23 | 20~35 | 30~50 | 50~70 |
| Stuffing Quantity | | | | | | | |
| 20'/40'/40'HQ | Set | 132/277/310 | 132/277/310 | 102/230/265 | 75/160/173 | 75/160/173 | 51/111/115 |

Classic Tropical Series (220V-50Hz-T3)

| Model | | | WT012C1BRN | WT018C1BRN | WT024C1BRN | WT030C1BRN |
|---|-------------------|-------------------|--------------|--------------|--------------|--------------|
| Capacity | | | | | | |
| Cooling | | Btu/h | 12000 | 18000 | 24000 | 30000 |
| | | KW | 3.5 | 5 | 7 | 8.5 |
| Electrica Date | | | | | | |
| Voltage,Frequency,Phase | | V-,Hz,Ph | 203-230,50,1 | 203-230,50,1 | 203-230,50,1 | 203-230,50,1 |
| Power Input | Cooling | W | 1250 | 2000 | 2640 | 3500 |
| Operating Current | Cooling | A | 5.6 | 9 | 12.1 | 16 |
| Performance | | | | | | |
| EER | Btu/W.h, W/W | | 9.6/2.80 | 9.0,2.6 | 9.0,2.6 | 8.6,2.52 |
| Dehumidifying volume | | L/h | 1.2 | 1.5 | 2.2 | 2.5 |
| Air Flow Volume | Indoor | m ³ /h | 520 | 800 | 1000 | 1100 |
| Noise Level | Indoor(Hi/Med/Lo) | dB(A) | 38/34/32 | 42/39/36 | 49/45/42 | 52/48/45 |
| | Outdoor | dB(A) | 55 | 58 | 60 | 62 |
| Net Dimension & Weight | | | | | | |
| Indoor unit | W×H×D | mm | 770×240×180 | 898×280×202 | 1033×313×202 | 1033×313×202 |
| Outdoor unit | W×H×D | mm | 700×552×256 | 820×605×300 | 820×605×300 | 902×650×307 |
| Net Weight | Indoor/Outdoor | kg | 8/31 | 11/40 | 14/44 | 14/59 |
| Packing Dimension & Gross Weight | | | | | | |
| Indoor unit | W×H×D | mm | 863×325×270 | 995×365×298 | 1103×400×300 | 1103×400×300 |
| Outdoor unit | W×H×D | mm | 803×598×380 | 955×650×438 | 955×650×438 | 1027×766×433 |
| Gross Weight | Indoor/Outdoor | kg | 10/34 | 15/44 | 17/50 | 17/65 |
| Piping Connetion | | | | | | |
| Liquid Side | mm(inch) | | Φ6(1/4") | Φ6(1/4") | Φ9.52(3/8") | Φ9.52(3/8") |
| Gas Side | mm(inch) | | Φ12(1/2") | Φ12(1/2") | Φ15.88(5/8") | Φ15.88(5/8") |
| Stuffing Quantity | | | | | | |
| 20'/40'/40'HQ | Set | | 102/230/265 | 72/156/175 | 70/150/166 | 55/124/146 |

Classic Tropical Series (220V-50Hz-T3)

| Model | | | WT012H1BRN | WT018H1BRN | WT024H1BRN | WT030H1BRN |
|---|-------------------|-------------------|--------------|--------------|--------------|--------------|
| Capacity | | | | | | |
| Cooling/Heating | | Btu/h | 12000/13500 | 18000/19000 | 24000/24500 | 30000/32000 |
| | | KW | 3.5 | 5.0/5.6 | 7.0/7.2 | 8.5/9.3 |
| Electrica Date | | | | | | |
| Voltage,Frequency,Phase | | V-,Hz,Ph | 203-230,50,1 | 203-230,50,1 | 203-230,50,1 | 203-230,50,1 |
| Power Input | Cooling/Heating | W | 1250/1200 | 2000/1970 | 2640/2600 | 3500/3300 |
| Operating Current | Cooling/Heating | A | 5.8/5.6 | 9.0/8.9 | 12/1.8 | 16.0/15.0 |
| Performance | | | | | | |
| EER | Btu/W.h, W/W | | 9.8/2.85 | 9.0,2.6 | 9.0,2.6 | 8.6,2.52 |
| COP | | W/W | 2.9 | 2.95 | 2.9 | 2.84 |
| Dehumidifying volume | | L/h | 1.2 | 1.5 | 2.2 | 2.5 |
| Air Flow Volume | Indoor | m ³ /h | 520 | 800 | 1000 | 1100 |
| Noise Level | Indoor(Hi/Med/Lo) | dB(A) | 38/34/32 | 42/39/36 | 49/45/42 | 52/48/45 |
| | Outdoor | dB(A) | 55 | 58 | 60 | 62 |
| Net Dimension & Weight | | | | | | |
| Indoor unit | W×H×D | mm | 770×240×180 | 898×280×202 | 1033×313×202 | 1033×313×202 |
| Outdoor unit | W×H×D | mm | 700×552×256 | 820×605×300 | 820×605×300 | 902×650×307 |
| Net Weight | Indoor/Outdoor | kg | 8/32 | 11/41 | 14/45 | 14/60 |
| Packing Dimension & Gross Weight | | | | | | |
| Indoor unit | W×H×D | mm | 863×325×270 | 995×365×298 | 1103×400×300 | 1103×400×300 |
| Outdoor unit | W×H×D | mm | 803×598×380 | 955×650×438 | 955×650×438 | 1027×766×433 |
| Gross Weight | Indoor/Outdoor | kg | 10/35 | 15/45 | 17/51 | 17/66 |
| Piping Connetion | | | | | | |
| Liquid Side | mm(inch) | | Φ6(1/4") | Φ6(1/4") | Φ9.52(3/8") | Φ9.52(3/8") |
| Gas Side | mm(inch) | | Φ12(1/2") | Φ12(1/2") | Φ15.88(5/8") | Φ15.88(5/8") |
| Stuffing Quantity | | | | | | |
| 20'/40'/40'HQ | Set | | 102/230/265 | 72/156/175 | 70/150/166 | 55/124/146 |

Nomenclature

Type

- W : Wall Split
- T : Cassette Split
- F : Floor Standing
- U : Universal Split
- D : Ducted Split
- H : Horiz . Cond. Unit
- V : Vert. Cond. Unit
- P : Roof Top Package
- L : Chilled Water FUC
- K : Window Unit

Series

Nominal Capacity
MB $\tau_u/H \times 1000$ B τ_u/H

Cooling Only - C

Heat pump - H

W A 018 C 1 A R E

- E: elect. heat optional
- N: no elect heat
- R: R-22
- N: R-407 C
- D: R-410 A
- A: T1 Stand. Ambient
- B: T3 Hi Ambient

Electncal code :

| 1 | 2 | 3 | 4 | 5 | 6 |
|-----------------------|-----------------------|-----------------------|-----------------------|-----------------------|-------------------|
| 220-240v/ 1ph/50hz | 208-230v/ 1ph/60hz | 110-120v/ 1ph/60hz | 380-420v/ 3ph/50hz | 200-230v/ 3ph/60hz | 460v/ 3ph/60hz |



Smart Air Conditioners for Smart people

Contact Information

P.O.Box 741074 Dallas, Texas 75374 USA

Tel: +9725639289

Fax: +9725635783

Website: www.windind.com

E-mail address: info@windind.com

Distributed by: